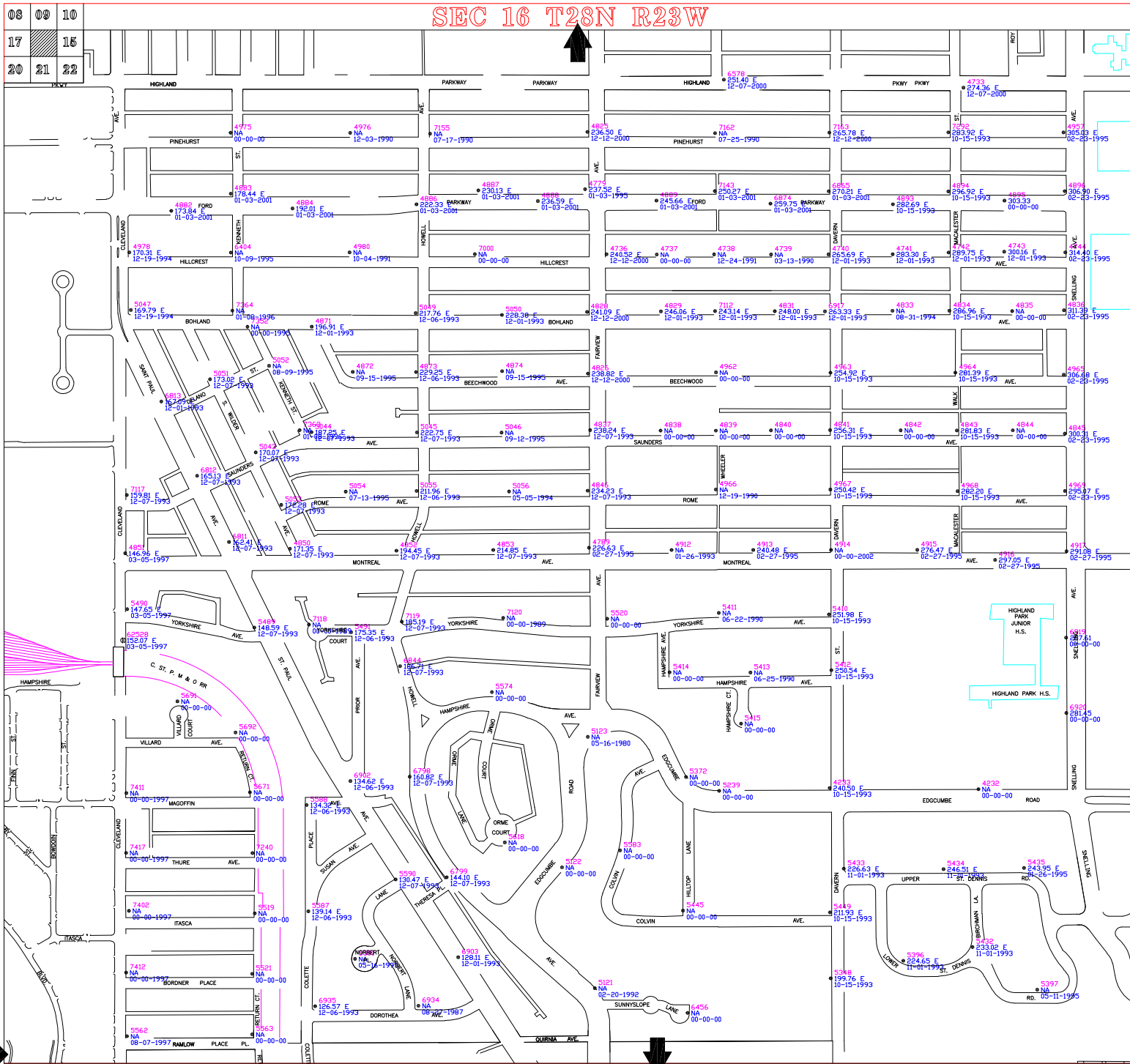


# SEC 16 T28N R23W



**CITY OF SAINT PAUL**  
**DEPARTMENT OF PUBLIC WORKS**  
 SURVEY SECTION

- LEGEND:**
- TOP NUT FIRE HYDRANT
  - PRIVATE HYDRANT
  - ⚡ SPIKE IN POWER POLE
  - ⬤ U. S. BENCH MARK
  - ⬤ STATE BENCH MARK
  - ⬤ RAMSEY CO. BENCH MARK
  - ⬤ BRIDGE DISK (NO STAMPING)
  - ◇ MISC. BENCH MARK
  - TRAVERSE POINT
  - TOP NUT MINNEAPOLIS FIRE HYDRANT

NOTES: ZERO CITY DATUM = 694.10 1929 NGVD  
 BENCH MARKS WITH "NA" AS AN ELEV. MEANS THERE IS NO ELEV. AVAILABLE.  
 STATE, COUNTY & U.S. BENCH MARKS ARE 1929 NGVD ELEVATIONS PUBLISHED BY OTHERS.  
 EXCEPT AS NOTED BELOW, ALL OTHER BENCH MARKS ARE BASED ON CITY OF SAINT PAUL DATUM.  
 ALL BENCH MARKS WITH ELEVATION BASED ON CITY DATUM ARE ESTABLISHED BY THE CITY OF SAINT PAUL.  
 ELEVATIONS WITH AN "T" SIGNIFY ADJUSTED ELECTRONIC LEVEL BENCHMARK LOOPS.  
 ELEVATIONS WITH AN "U" SIGNIFY UNADJUSTED ELECTRONIC LEVEL BENCHMARK LOOPS.  
 (ST. PAUL SURVEYOR OFFICE USE ONLY).

THE FOLLOWING APPLIES TO HYDRANT BENCHES ONLY:

ELEVATION = NA THEN DATE IS THE INSTALLED, MOVED OR REPLACED DATE  
 ELEVATION = ? THEN DATE IS THE REPAIR DATE  
 ELEVATION = NA THEN DATE IS WHEN THE BENCH WAS ESTABLISHED

**SEC 16 T28N R23W**

BASE MAP 01-29-1993  
 HYDRANTS 01-28-1999  
 ADJUSTED 00-00-0000