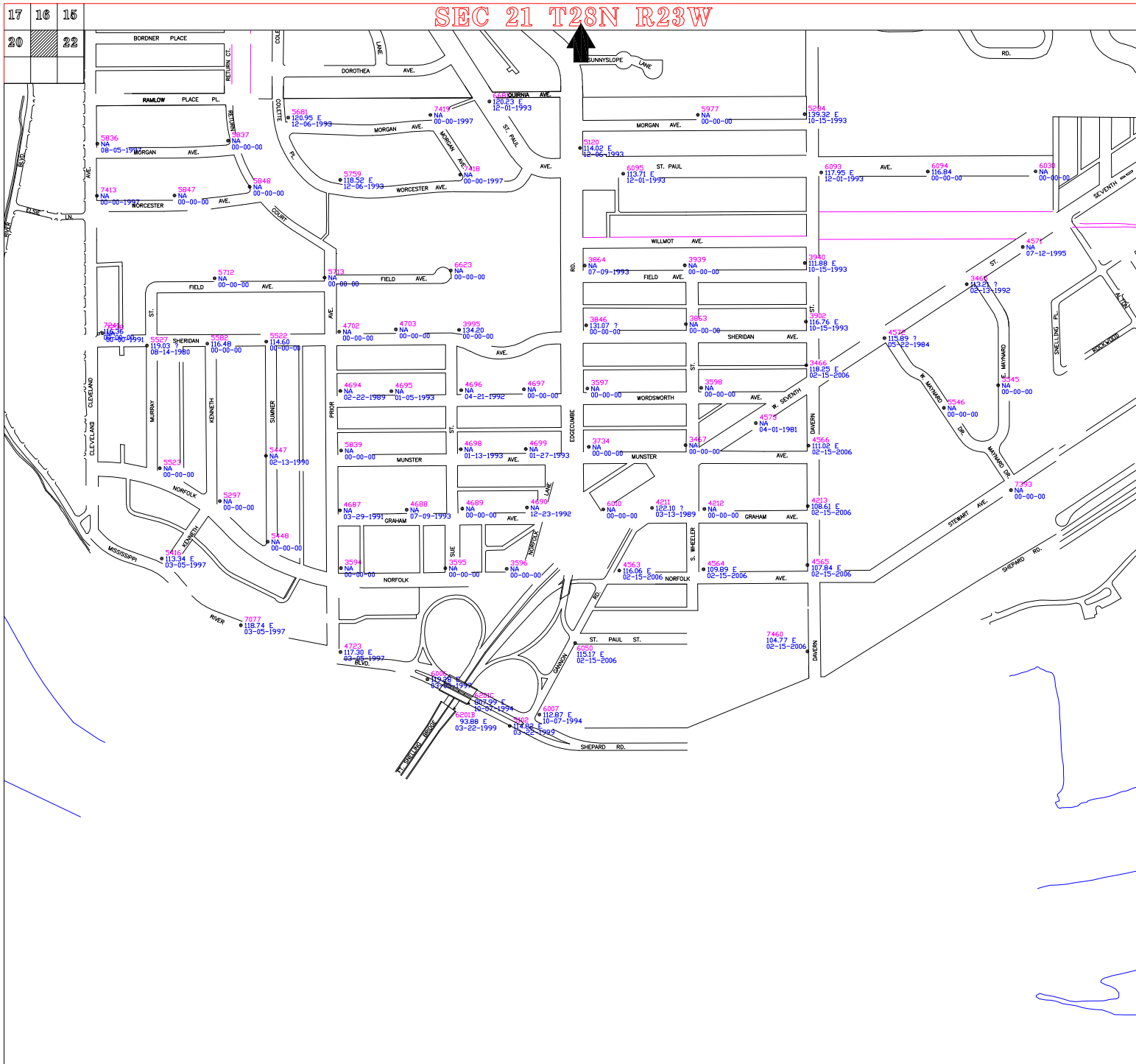


# SEC 21 T28N R23W



**CITY OF SAINT PAUL**  
**DEPARTMENT OF PUBLIC WORKS**  
 SURVEY SECTION

- LEGEND:**
- TOP NUT FIRE HYDRANT
  - PRIVATE HYDRANT
  - ⚡ SPIKE IN POWER POLE
  - ⊕ U. S. BENCH MARK
  - ⊕ STATE BENCH MARK
  - ⊕ RAMSEY CO. BENCH MARK
  - ⊕ BRIDGE DISK (NO STAMPING)
  - ◇ MISC. BENCH MARK
  - TRAVERSE POINT
  - TOP NUT MINNEAPOLIS FIRE HYDRANT

**NOTES:** ZERO CITY DATUM = 694.10 1929 NGVD  
 BENCH MARKS WITH "NA" AS AN ELEV. MEANS THERE IS NO ELEV. AVAILABLE.  
 STATE, COUNTY & U.S. BENCH MARKS ARE 1929 NGVD ELEVATIONS PUBLISHED BY OTHERS, EXCEPT AS NOTED BELOW. ALL OTHER BENCH MARKS ARE BASED ON CITY OF SAINT PAUL DATUM.  
 ALL BENCH MARKS WITH ELEVATION BASED ON CITY DATUM ARE ESTABLISHED BY THE CITY OF SAINT PAUL.  
 ELEVATIONS WITH AN "E" SIGNIFIES ADJUSTED ELECTRONIC LEVEL BENCHMARK. UNADJUSTED ELECTRONIC LEVEL BENCHMARK ELEVATIONS WITH AN "U" SIGNIFIES UNADJUSTED ELECTRONIC LEVEL BENCHMARK (ST. PAUL SURVEYOR OFFICE USE ONLY).

**THE FOLLOWING APPLIES TO HYDRANT BENCHES ONLY:**

ELEVATION = NA THEN DATE IS THE INSTALLED, MOVED OR REPLACED DATE.  
 ELEVATION = ? THEN DATE IS THE REPAIR DATE.  
 ELEVATION = NA THEN DATE IS WHEN THE BENCH WAS ESTABLISHED.

**SEC 21 T28N R23W**

BASE MAP 01-29-1993  
 HYDRANTS 02-15-2006  
 ADJUSTED 00-00-0000