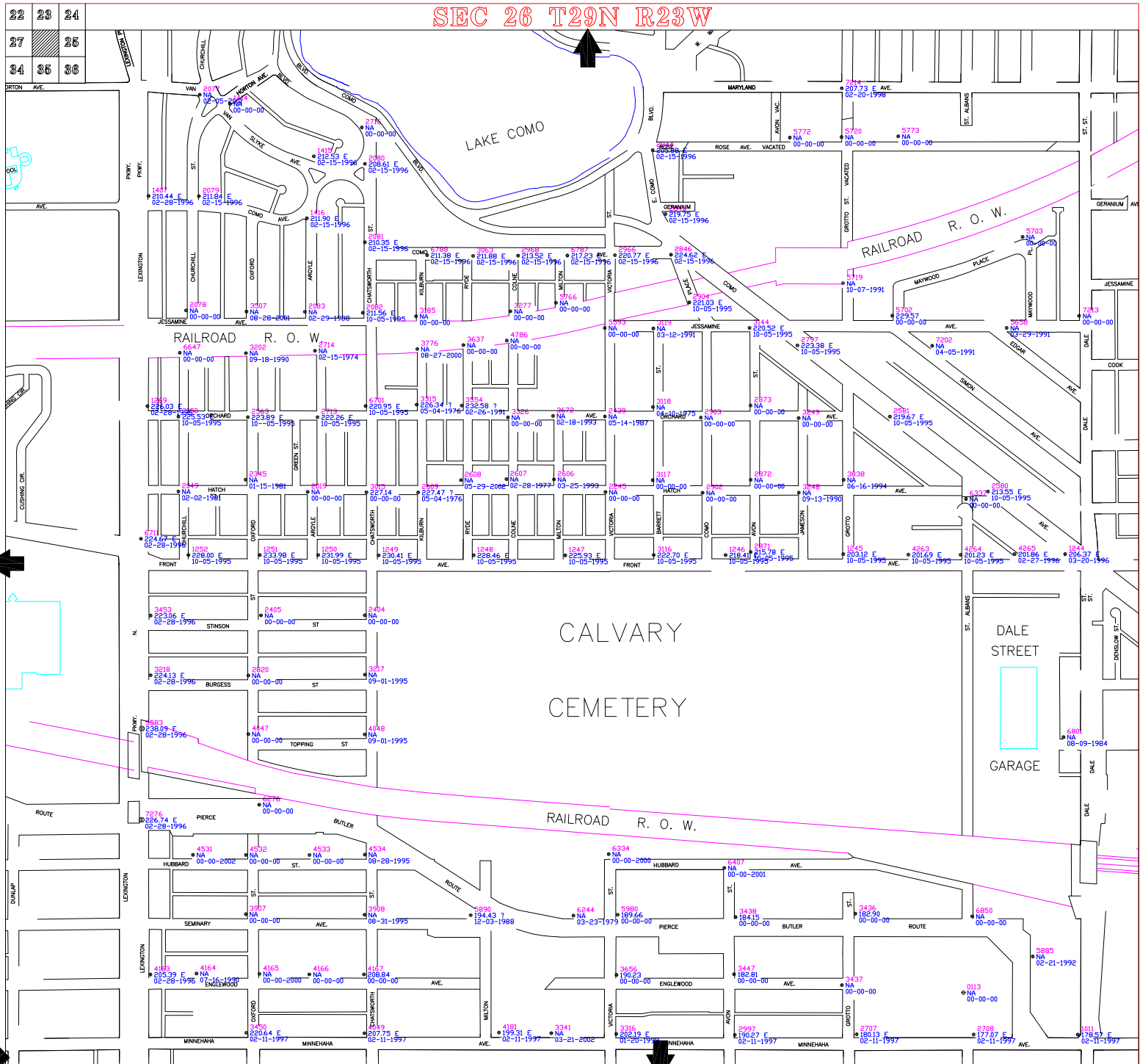


SEC 26 T29N R23W



CITY OF SAINT PAUL
 DEPARTMENT OF PUBLIC WORKS
 SURVEY SECTION

LEGEND:

- TOP NUT FIRE HYDRANT
- PRIVATE HYDRANT
- ⚡ SPIKE IN POWER POLE
- ⊕ U. S. BENCH MARK
- ⊙ STATE BENCH MARK
- ⊕ RAMSEY CO. BENCH MARK
- ⊕ BRIDGE DISK (NO STAMPING)
- ◇ MISC. BENCH MARK
- TRAVERSE POINT
- TOP NUT MINNEAPOLIS FIRE HYDRANT

NOTES: ZERO CITY DATUM = 694.10 1929 NGVD
 BENCH MARKS WITH "NA" AS AN ELEV. MEANS THERE IS NO ELEV. AVAILABLE.
 STATE, COUNTY & U.S. BENCH MARKS ARE 1929 NGVD ELEVATIONS PUBLISHED BY OTHERS.
 EXCEPT AS NOTED BELOW, ALL OTHER BENCH MARKS ARE BASED ON CITY OF SAINT PAUL DATUM.
 ALL BENCH MARKS WITH ELEVATION BASED ON CITY DATUM ARE ESTABLISHED BY THE CITY OF SAINT PAUL.
 ELEVATIONS WITH AN "E" SIGNIFIES ADJUSTED ELECTRONIC LEVEL BENCHMARK, LOOPS
 ELEVATIONS WITH AN "U" SIGNIFIES UNADJUSTED ELECTRONIC LEVEL BENCHMARK
 (ST. PAUL SURVEYOR OFFICE USE ONLY).

THE FOLLOWING APPLIES TO HYDRANT BENCHES ONLY:
 IF ELEVATION = NA THEN DATE IS THE INSTALLED, MOVED OR REPLACED DATE
 IF ELEVATION = 7 THEN DATE IS THE REPAIR DATE
 IF ELEVATION ≠ NA THEN DATE IS WHEN THE BENCH WAS ESTABLISHED

SEC 26 T29N R23W

BASE MAP 01-29-1993
 HYDRANTS 01-28-1999
 ADJUSTED 00-00-0000