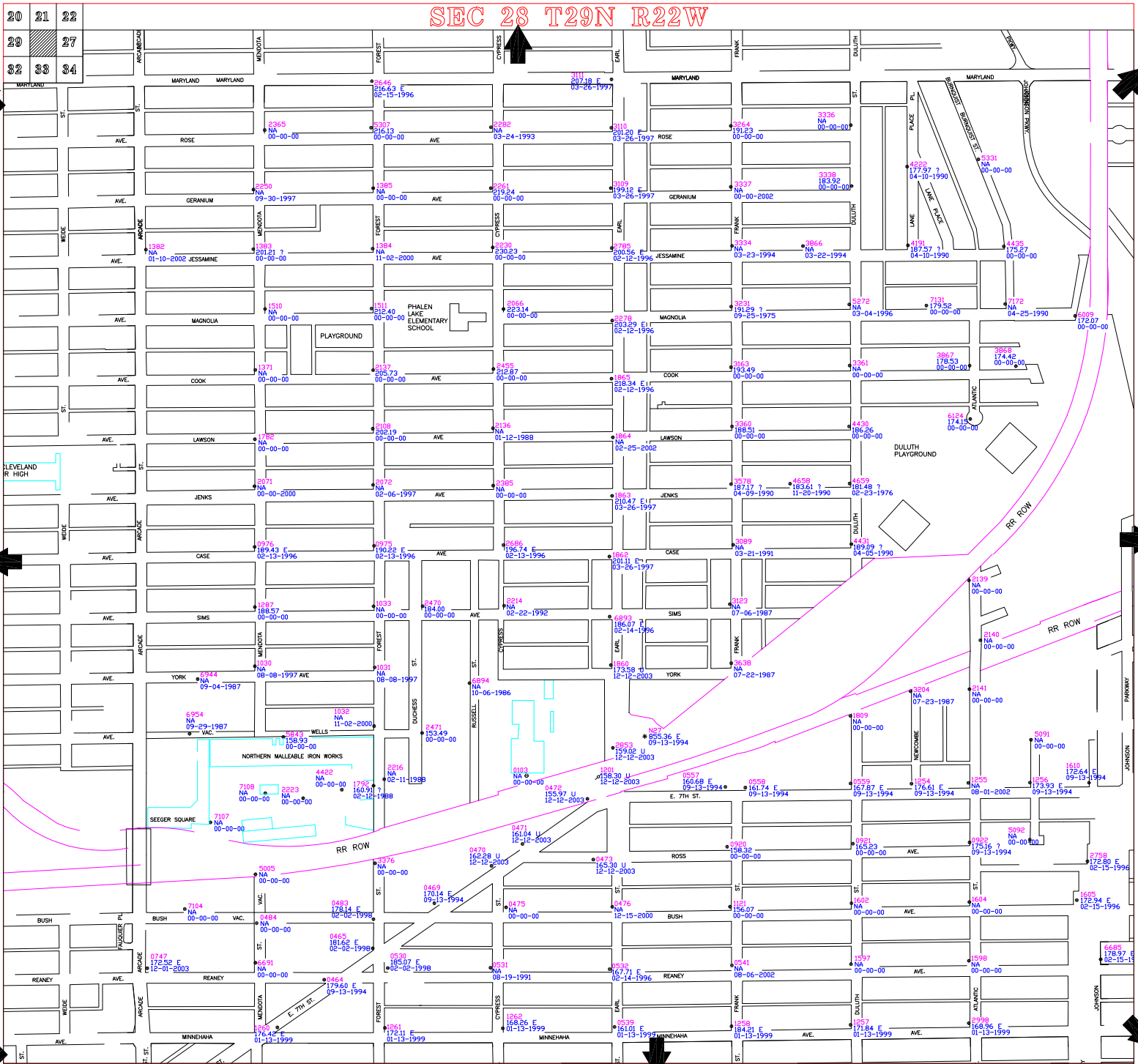


# SEC 28 T29N R22W



**CITY OF SAINT PAUL**  
 DEPARTMENT OF PUBLIC WORKS  
 SURVEY SECTION

- LEGEND:**
- TOP NUT FIRE HYDRANT
  - ◊ MISC. BENCH MARK
  - ◊ PRIVATE HYDRANT
  - ◊ TRAVERSE POINT
  - ◊ SPIKE IN POWER POLE
  - U. S. BENCH MARK
  - U. S. BENCH MARK
  - STATE BENCH MARK
  - RAMSEY CO. BENCH MARK
  - ◊ BRIDGE DISK (NO STAMPING)
  - ◊ TOP NUT MINNEAPOLIS FIRE HYDRANT

NOTES: ZERO CITY DATUM = 694.10 1929 NGVD  
 BENCH MARKS WITH "NA" AS AN ELEV. MEANS THERE IS NO ELEV. AVAILABLE.  
 STATE, COUNTY & U.S. BENCH MARKS ARE 1929 NGVD ELEVATIONS PUBLISHED BY OTHERS.  
 EXCEPT AS NOTED BELOW, ALL OTHER BENCH MARKS ARE BASED ON CITY OF SAINT PAUL DATUM.  
 ALL BENCH MARKS WITH ELEVATION BASED ON CITY DATUM ARE ESTABLISHED BY THE CITY OF ST PAUL.  
 ELEVATIONS WITH AN "S" SIGNIFIES ADJUSTED ELECTRONIC LEVEL BENCHMARK LOOPS.  
 ELEVATIONS WITH AN "U" SIGNIFIES UNADJUSTED ELECTRONIC LEVEL BENCHMARK.  
 (ST PAUL SURVEYOR OFFICE USE ONLY.)

THE FOLLOWING APPLIES TO HYDRANT BENCHES ONLY:  
 SEC 28 T29N R22W  
 IF ELEVATION = NA THEN DATE IS THE INSTALLED, MOVED OR REPLACED DATE.  
 IF ELEVATION = ? THEN DATE IS THE REPAIR DATE.  
 IF ELEVATION IF NA THEN DATE IS WHEN THE BENCH WAS ESTABLISHED.

BASE MAP 01-29-1993  
 HYDRANTS 12-12-2000  
 ADJUSTED 00-00-0000