

CERTIFICATE OF LOCATION OF GOVERNMENT CORNER

CITY MON. NO. 9

OLD INDEX NO. 1718

NW Corner of Section 24 Township 29 Range 23, P.M.

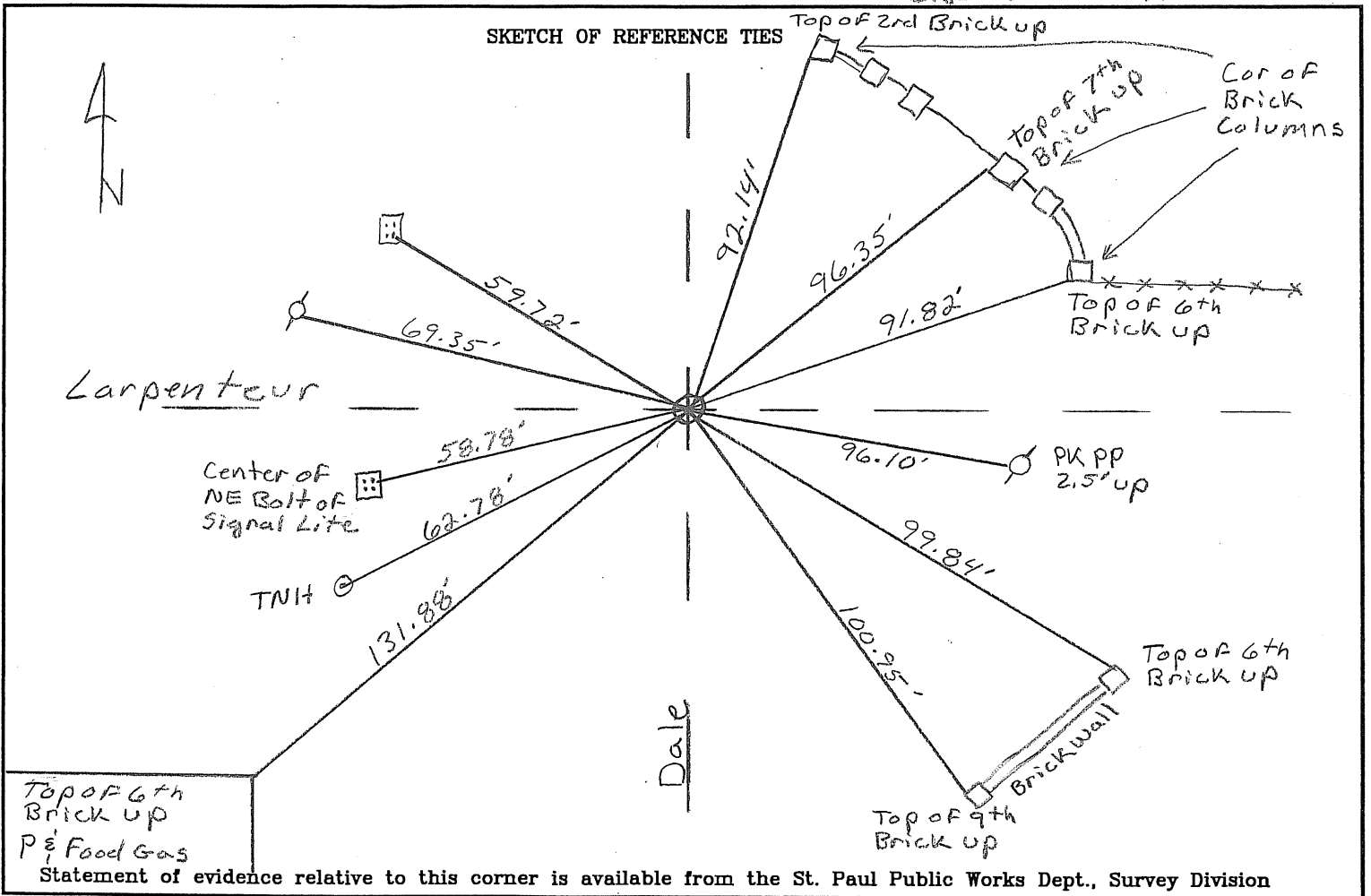
STATE OF MINNESOTA, County of Ramsey

At the corner location shown on the sketch:

On 12-07-09 found a CIM @ Grade
date

- left monument as found
 lowered monument
 removed monument (explain)

On 12-07-09 placed a New ties (set SE EDM ties)
date CREW DN KL



I hereby certify that this document and the data contained herein was prepared by me or under my direct supervision.

[Signature] Feb 3, 2010
SIGNATURE DATE

Registration No. 44880

- Land Surveyor County Surveyor
 Professional Engineer
 Chief Surveyor, City of St. Paul

Office of The County Recorder, County of Ramsey

I hereby certify that this document was filed in the county
 Recorders office at M. on the day of

County Recorder

By , Deputy

DOCUMENT NUMBER