

CERTIFICATE OF MONUMENT LOCATION

STATION
CITY MON. NO. 0065

OLD INDEX NO. 1054

CENTER ~~Sec~~ Corner in the NW Qtr. of Section 29 Township 29 Range 23

STATE OF MINNESOTA, County of Ramsey

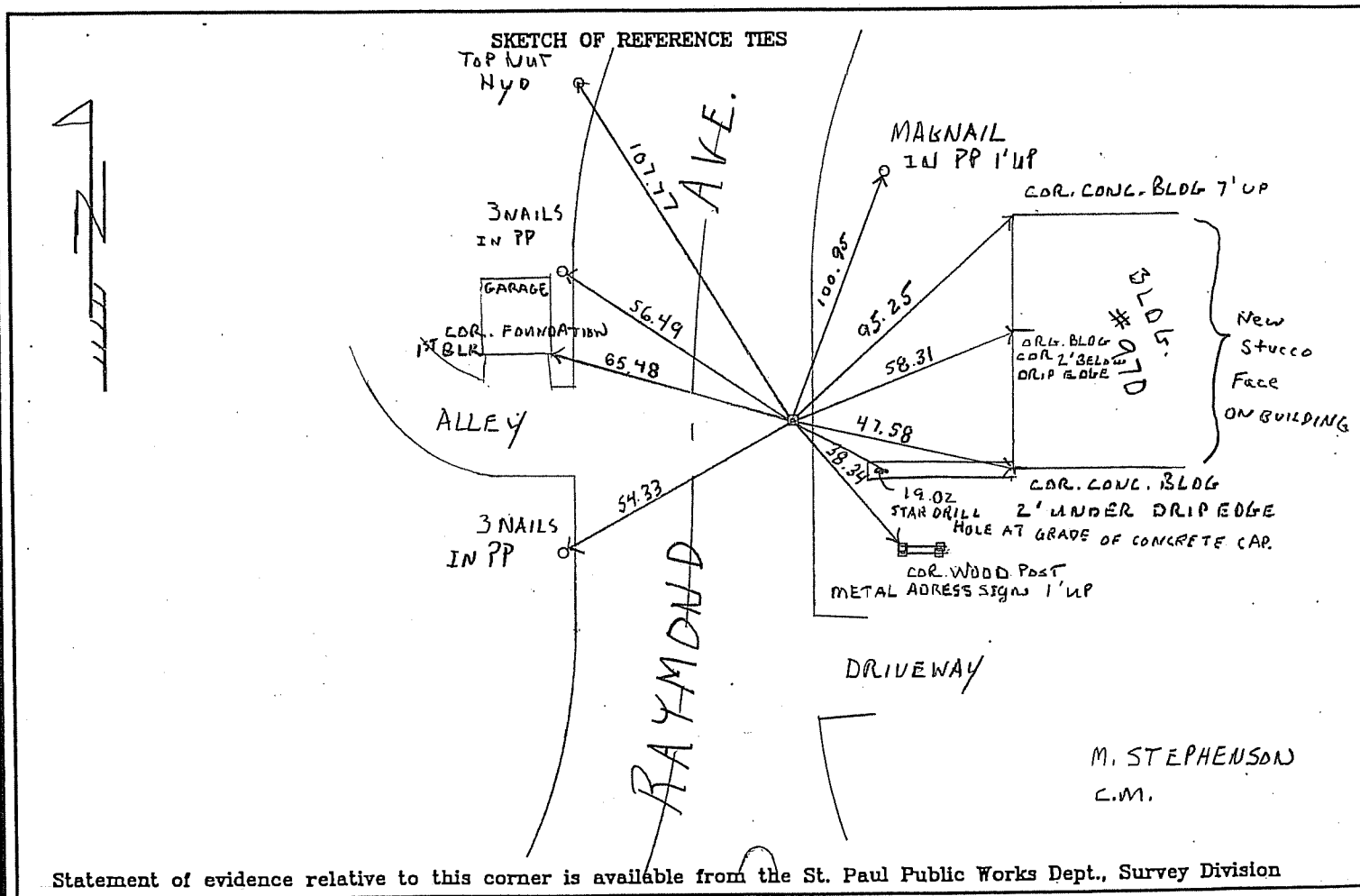
At the corner location shown on the sketch:

On 3-23-2009 found a GM .05 BELOW ASPHALT GRADE (PK
date

IN CENTER OF MANT.) E. GUTTER RAYMOND AVE.

left monument as found lowered monument removed monument (explain)

On 3-23-2009 placed NEW TIES
date



Statement of evidence relative to this corner is available from the St. Paul Public Works Dept., Survey Division

I hereby certify that this document and the data contained herein was prepared by me or under my direct supervision.

[Signature] MAY 7, 2009
SIGNATURE DATE

Registration No. 44880

- Land Surveyor County Surveyor
 Professional Engineer
 Chief Surveyor, City of St. Paul

Office of The County Recorder, County of Ramsey

I hereby certify that this document was filed in the county
Recorders office at _____ M. on the _____ day of _____

County Recorder _____

By _____, Deputy

DOCUMENT NUMBER _____