

CERTIFICATE OF MONUMENT LOCATION

CITY MON. NO. 129

OLD INDEX NO. 0894

SEC Corner in the NW Qtr. of Section 4 Township 28 Range 23

STATE OF MINNESOTA, County of Ramsey

At the corner location shown on the sketch:

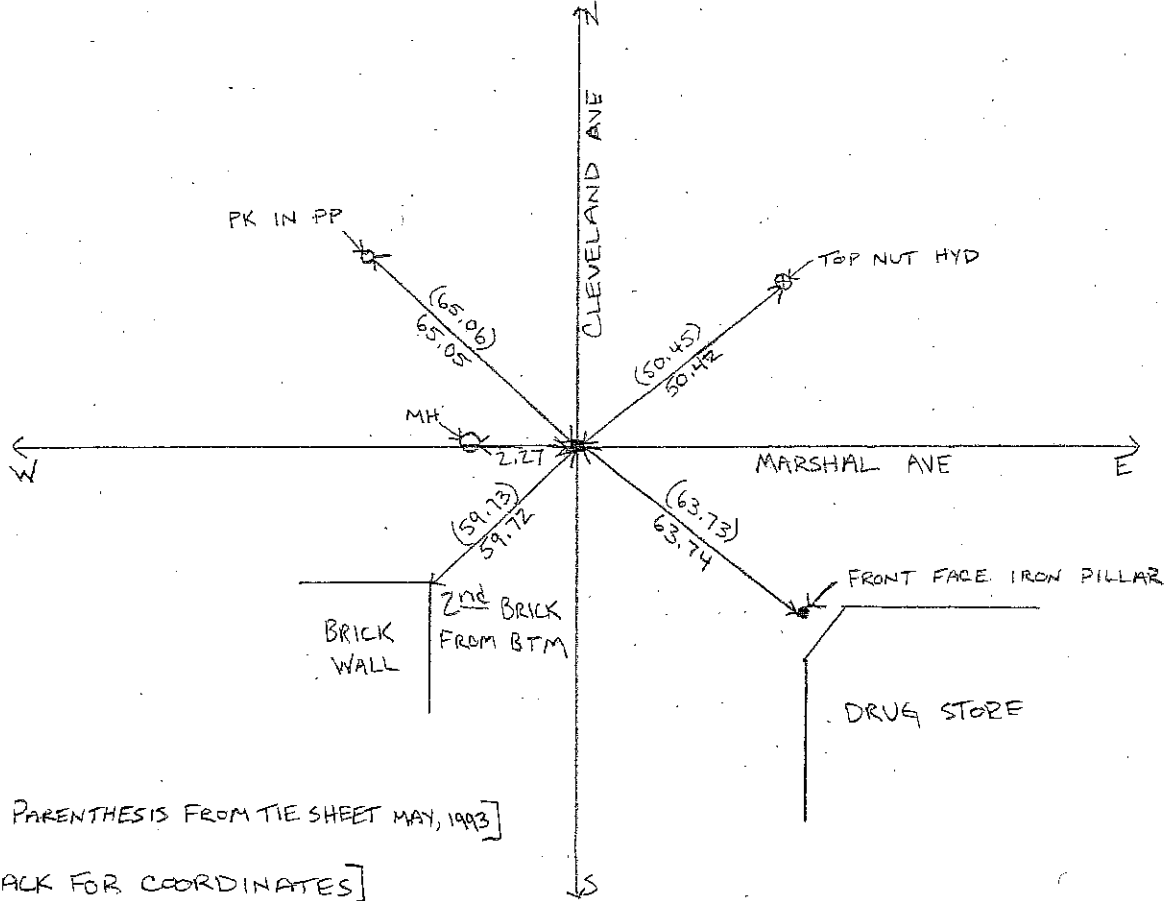
On FEB 27, 2013 found a CIM AT GRADE MEASURED WITH TRIMBLE
date

GPS, REMOVED TO INSTALL NEW SEWER STRUCTURE

- left monument as found
 lowered monument
 removed monument (explain)

On APR 11, 2013 placed a PK AT TEMP GPS POSITION WITH NEW TIES
date

SKETCH OF REFERENCE TIES



[TIES IN PARENTHESIS FROM TIE SHEET MAY, 1993]

[SEE BACK FOR COORDINATES]

Statement of evidence relative to this corner is available from the St. Paul Public Works Dept., Survey Division

R.W.
J.K.

I hereby certify that this document and the data contained herein was prepared by me or under my direct supervision.

[Signature] APRIL 3, 2014
SIGNATURE DATE

Registration No. 44880

- Land Surveyor County Surveyor
 Professional Engineer
 Chief Surveyor, City of St. Paul

Office of The County Recorder, County of Ramsey

I hereby certify that this document was filed in the county

Recorders office at _____ M. on the _____ day of _____

County Recorder _____

By _____, Deputy

DOCUMENT NUMBER _____

GPS COORDINATES, DATA COLLECTOR FILE "CLEVE MARSH CIM"
(POINT # 100)

<u>N</u>	<u>E</u>	<u>EL</u>
157404.655	550745.737	191.930
157404.649	550745.741	191.949
157404.640	550745.744	191.927
157404.655	550745.731	191.949
157404.638	550745.737	191.932
	<u>550745.738</u>	<u>191.937</u>

* AVE. = 157404.647

* = GPS COORDINATES USED FOR TEMP P.K. PLACEMENT APR 11, 2013