

CERTIFICATE OF LOCATION OF GOVERNMENT CORNER

CITY MON. NO. 214
 OLD INDEX NO. 1293

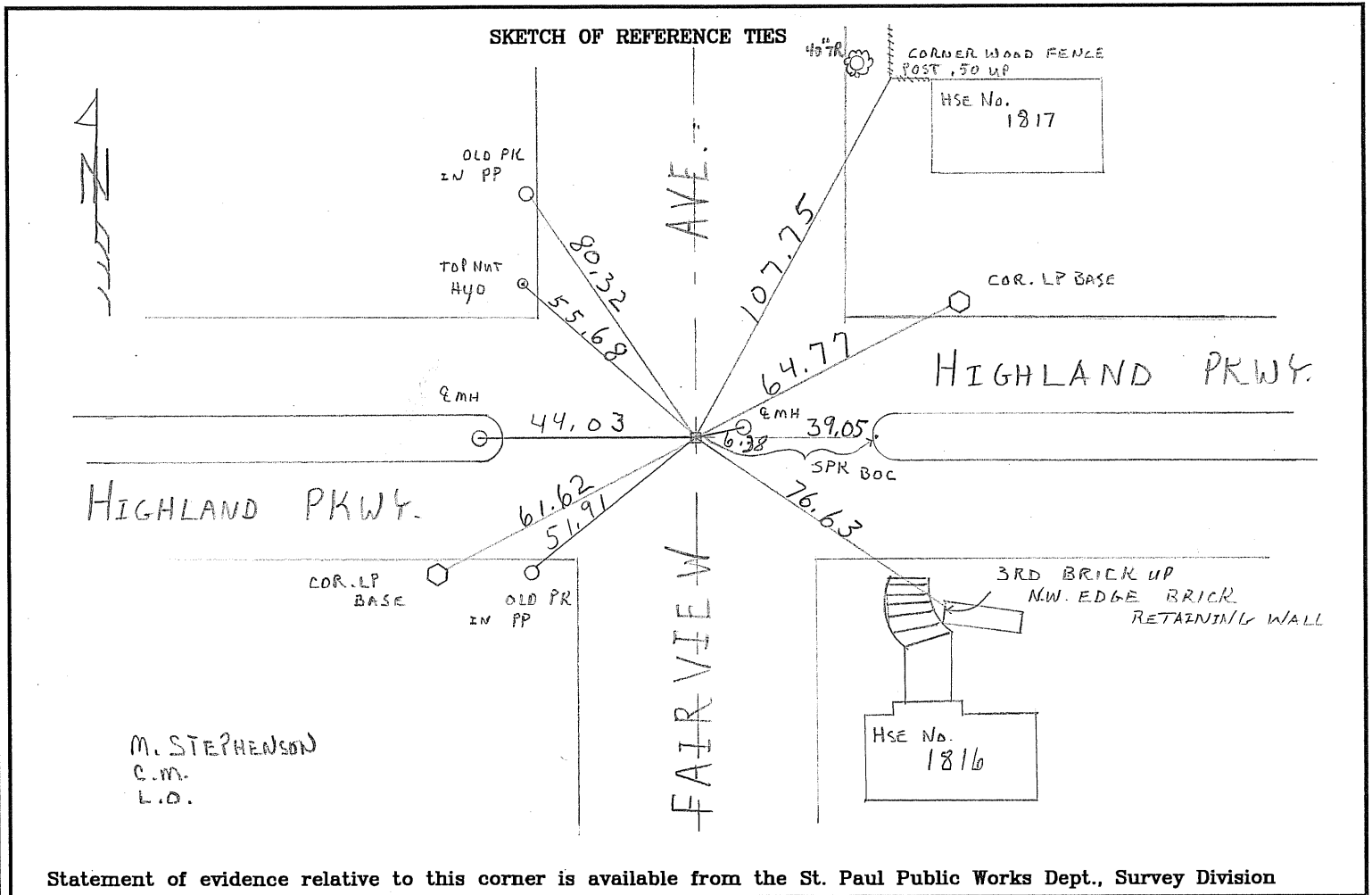
1/4 Corner of Section 16 Township 28 Range 23, P.M.

STATE OF MINNESOTA, County of Ramsey
 At the corner location shown on the sketch:

On Oct. 15, 2010 found a GM .50 BELOW ASPHALT GRADE
date

- left monument as found lowered monument removed monument (explain)

On Oct. 15, 2010 placed a IRON CASTING OVER GM EPOXYED BRASS DISC IN CENTER HOLE OF GM - PHOTOS - TIES
date



I hereby certify that this document and the data contained herein was prepared by me or under my direct supervision.

[Signature] July 29, 2011
SIGNATURE DATE

- Registration No. 44880
- Land Surveyor County Surveyor
 Professional Engineer
 Chief Surveyor, City of St. Paul

Office of The County Recorder, County of Ramsey

I hereby certify that this document was filed in the county
 Recorder's office at _____ M. on the _____ day of _____

County Recorder _____

By _____, Deputy

DOCUMENT NUMBER _____