

CERTIFICATE OF MONUMENT LOCATION

CITY MON. NO. 658

OLD INDEX NO. fk

1/16 Corner in the NW Qtr. of Section 29 Township 29 Range 23

STATE OF MINNESOTA, County of Ramsey

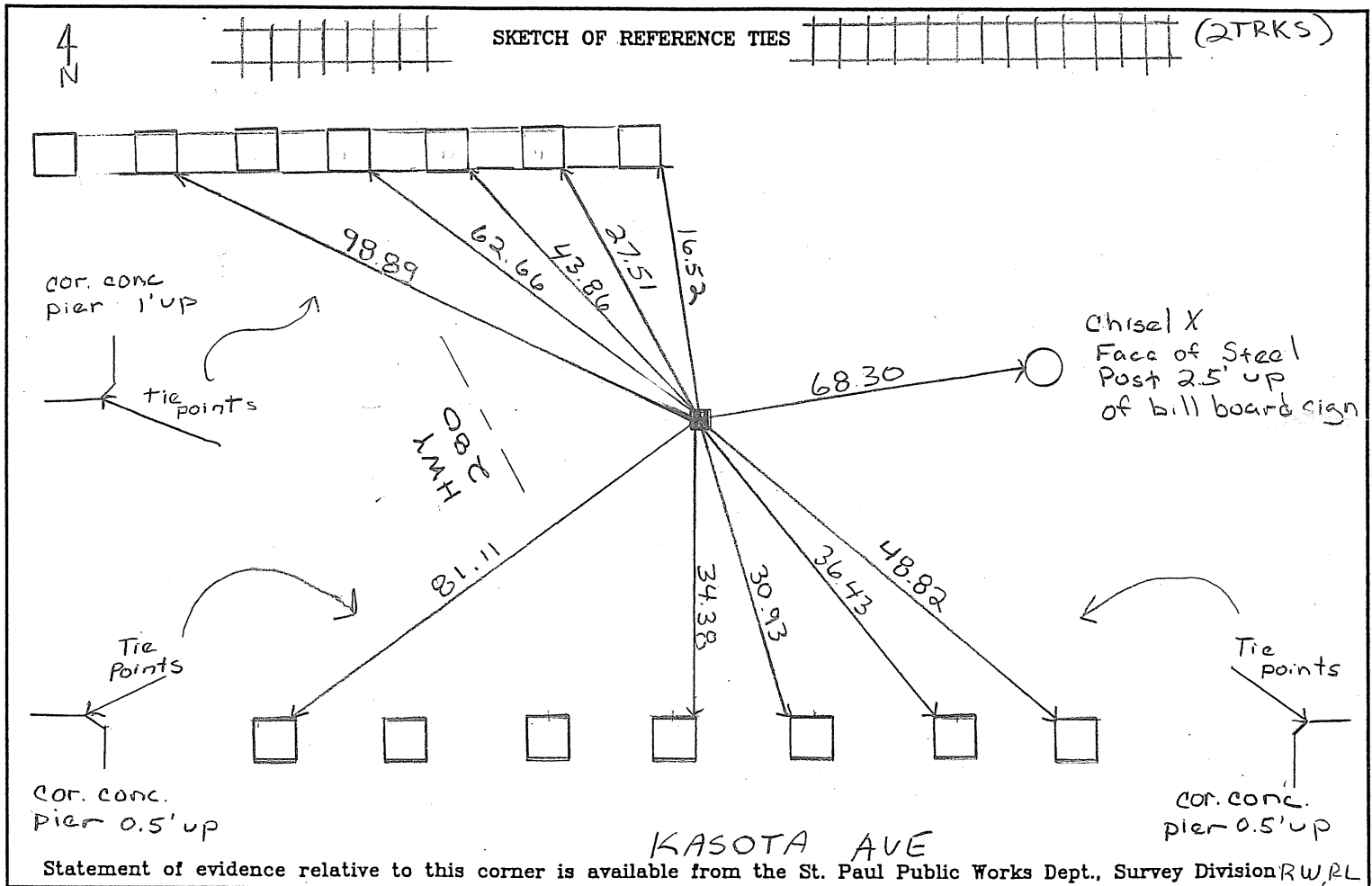
At the corner location shown on the sketch:

On Feb 6, 2008 found a Granite Monument 4' below

ground grade, placed magnet in center hole, placed ties

- left monument as found lowered monument removed monument (explain)

On _____ placed a _____



I hereby certify that this document and the data contained herein was prepared by me or under my direct supervision.

[Signature] JUNE 5, 2008

SIGNATURE DATE

Registration No. 44880

- Land Surveyor County Surveyor
- Professional Engineer
- Chief Surveyor, City of St. Paul

Office of The County Recorder, County of Ramsey

I hereby certify that this document was filed in the county

Recorders office at _____ M. on the _____ day of _____

County Recorder _____

By _____, Deputy

DOCUMENT NUMBER _____

C0.79
TOP GM

Feb 06, 08 RW, RL

TBM	0.64				top conc pier see photo
TBM			9.43		top GM# 658