

MINNESOTA DEPARTMENT OF TRANSPORTATION CERTIFICATE OF LOCATION OF ORIGINAL BLOCK CORNER

NW CORNER OF BLOCK 15, DUNWELL & SPENCER'S ADDITION TO BROOKLYND

City of Saint Paul, Ramsey County, Minnesota.

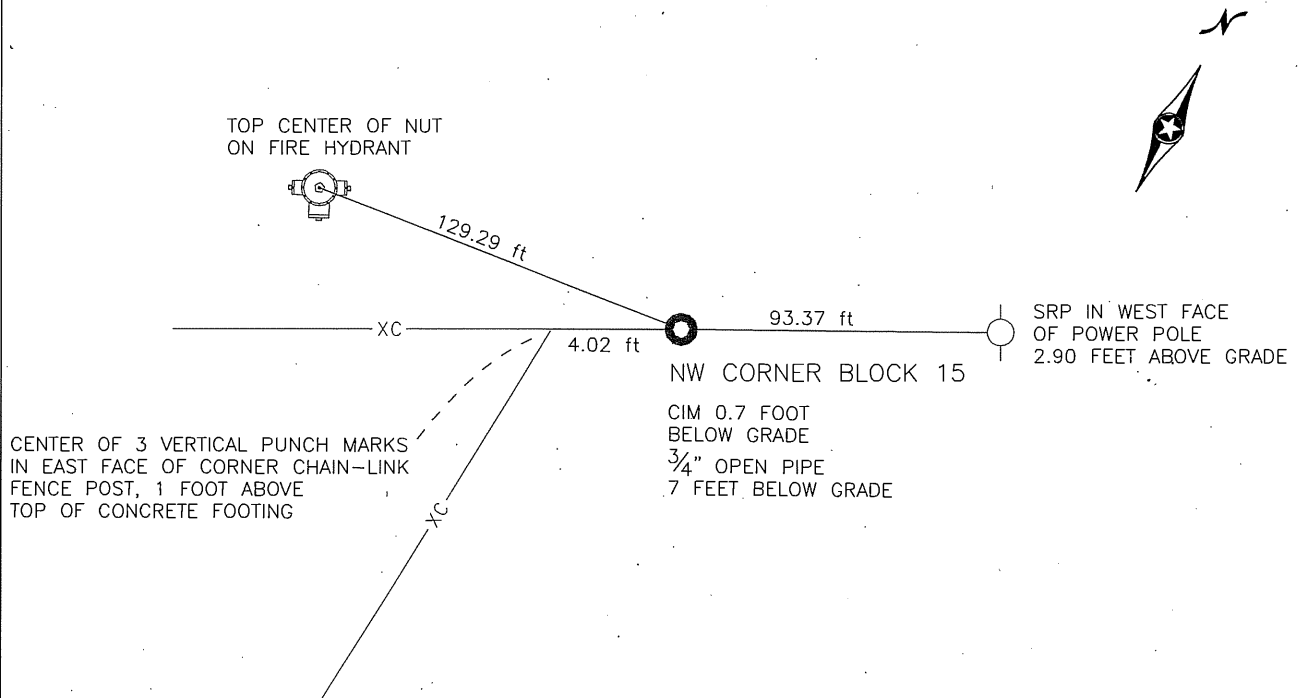
At the corner location shown on the sketch:

- On JUNE 22, 2009 found 3/4" OPEN PIPE 7 FEET BELOW GRADE
- left monument as found, lowered monument, removed monument (explain)

- On JUNE 23, 2009 placed a 4" MN/DOT CAST IRON MONUMENT,
ABOVE 3/4" OPEN PIPE AND 0.7 FOOT BELOW GRADE

Corner reference ties measured on OCTOBER 9, 2009

Statement of evidence relative to this corner location is on back of page.
Photographs of evidence and reference ties are attached to this page.



AN SRP IS A COPPER NAIL AND DISC STAMPED "MN/DOT" AND "SRP".
The tie distance to the fence post was measured with a steel tape.
All other tie distances were measured with an electronic distance meter.

I hereby certify that this document and the data contained herein was prepared by me or under my direct supervision. I further certify that this document conforms to applicable portions of Minnesota State Statute 381.12.

Matthew J. Wernet
Matthew J. Wernet, Mn/DOT Surveys
Minnesota License No. 41888

11/16/2009
Date

Northwest Corner, Block 15, Dunwell & Spencer's Add to Brooklynd**Statement of Evidence**

- 1855 Month of September, D. L. Turpin, Surveyor, surveys and plats BROOKLYND.
- 1856 Month of December, D. L. Turpin, Surveyor, surveys and plats DUNWELL AND SPENCER'S ADDITION TO BROOKLYND.
- 1959 March 10th, City of Saint Paul survey personnel locate an original iron monument at the northwest corner of block 15, DUNWELL AND SPENCER'S ADDITION TO BROOKLYND, 3 feet below grade. Ties to the monument are taken and the survey is recorded in field book 1424 on page 53.
- 1988 February 3rd, City of Saint Paul survey crew re-visits original iron monument at the northwest corner of block 15, DUNWELL AND SPENCER'S ADDITION TO BROOKLYND. The monument is now 7 feet below grade. Ties to the monument are taken and field book 1424, page 53 is updated with the new ties.
- 2009 June 22nd, Mn/DOT survey personnel locate $\frac{3}{4}$ " iron pipe monument, 7 feet below grade using the tie to fence post and excavating with a backhoe. The monument is very rusted and pitted, but stable and undisturbed.
- 2009 June 23rd, Mn/DOT survey personnel set a Mn/DOT cast iron monument above the found $\frac{3}{4}$ " iron pipe monument and 0.7 feet below grade.
- 2009 October 9th, Mn/DOT survey personnel take ties to MnDOT cast iron monument and prepare certificate of location to perpetuate the position of the corner.

Summary and Conclusion:

Mn/DOT survey personnel located a granite monument (City Mon. 2545) at the northeast corner of block 11, BROOKLYND. The platted distance in between this granite monument and the iron pipe at the northwest corner of block 15 DUNWELL AND SPENCER'S ADDITION TO BROOKLYND is 1140.00 feet. The measured distance is 1140.02 foot. Mn/DOT survey personnel also located a 3.5" brass disk in a cast iron pipe (USHL MON 450) on the west line of State Street. Said brass monument is 3 feet below grade, stable & undisturbed. This monument fits well with the granite monument at the northeast corner of said block 11. The three monuments taken together are the oldest, most definitive evidence that I could find to retrace the plats of BROOKLYND and DUNWELL AND SPENCER'S ADDITION TO BROOKLYND. The description for the floodwall, constructed by the city for flood control purposes, across blocks 18, 19 & 20 BROOKLYND fits well with the field positions of all three monuments (see abstract doc.s 1678575, 2094444). Consequently, the iron pipe at the northwest corner of said block 15 is very old, its position is corroborated by other field evidence, and it fits with other recorded survey data. I conclude, therefore, that the iron pipe (and the cim above it) is in the position of the original block corner.