

CERTIFICATE OF MONUMENT LOCATION

CITY MON. NO. 1599

OLD INDEX NO. 1701

Corner in the SW Qtr. of Section 32 Township 29 Range 22

STATE OF MINNESOTA, County of Ramsey

At the corner location shown on the sketch:

On OCT. 1. 2007 found a GM 2.8' BELOW ASPHALT GRADE

date

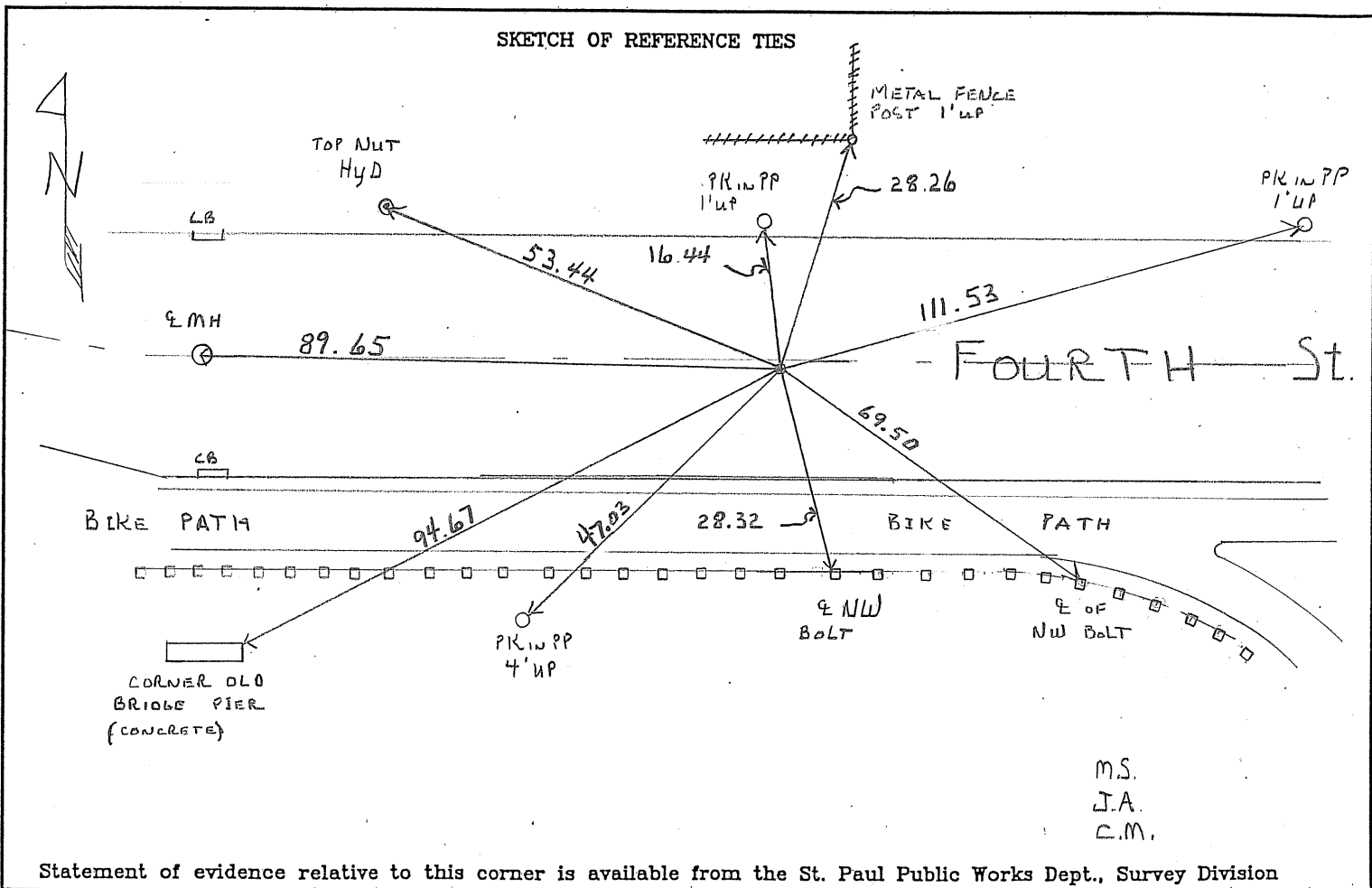
UNDER CAST IRON COVER SEC 32-29-22 1/4 E FOURTH ST.

left monument as found lowered monument removed monument (explain)

On OCT 1. 2007 placed a NEW TIES

date

SKETCH OF REFERENCE TIES



Statement of evidence relative to this corner is available from the St. Paul Public Works Dept., Survey Division

I hereby certify that this document and the data contained herein was prepared by me or under my direct supervision.

[Signature] NOV 9, 2007
SIGNATURE DATE

Registration No. 44880

Land Surveyor County Surveyor

Professional Engineer

Chief Surveyor, City of St. Paul

Office of The County Recorder, County of Ramsey

I hereby certify that this document was filed in the county
Recorders office at _____ M. on the _____ day of _____

County Recorder _____

By _____, Deputy

DOCUMENT NUMBER _____