

MINNESOTA DEPARTMENT OF TRANSPORTATION CERTIFICATE OF LOCATION OF BLOCK CORNER

NE CORNER OF BLOCK 11, TOWN OF BROOKLYND

City of Saint Paul, Ramsey County, Minnesota.

At the corner location shown on the sketch:

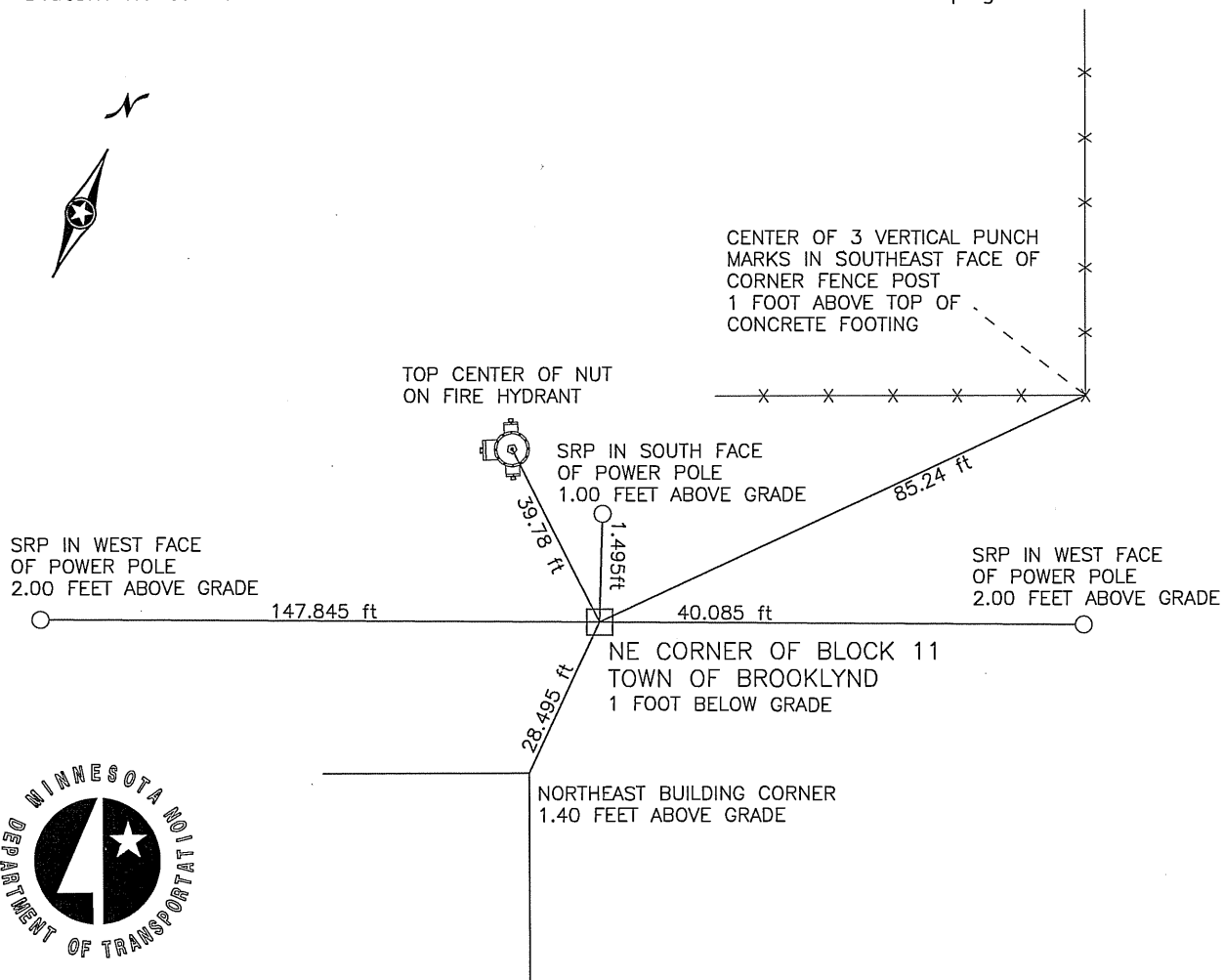
On MARCH 23, 2009 found GRANITE STONE 1 FOOT BELOW GRADE

left monument as found, lowered monument, removed monument (explain)

On _____ placed a _____

Corner reference ties measured on DECEMBER 10, 2009

Statement of evidence relative to this corner location is on back of page.



AN SRP IS A COPPER NAIL AND DISC STAMPED "MN/DOT" AND "SRP".
Tie distances were measured with an electronic distance meter.

I hereby certify that this document and the data contained herein was prepared by me or under my direct supervision. I further certify that this document conforms to applicable portions of Minnesota State Statute 381.12.

Matthew J. Wernet
Matthew J. Wernet, Mn/DOT Surveys
Minnesota License No. 41888

12/29/2009
Date

Northeast Corner, Block 11, Town of BrooklyndStatement of Evidence

- 1855 Month of September, D. L. Turpin, Surveyor, surveys and plats BROOKLYND.
- 1856 Month of December, D. L. Turpin, Surveyor, surveys and plats DUNWELL AND SPENCER'S ADDITION TO BROOKLYND. The lots and blocks in BROOKLYND are also shown in DUNWELL AND SPENCER'S ADDITION TO BROOKLYND.
- 1890 October 20th, The monument at the southwest corner of Fenton & Alabama is reset by J. H. Armstrong.
- 1992 October 26th, City of Saint Paul survey personnel locate a granite monument at the southwest corner of Fenton & Alabama.
- 2009 March 23rd, Mn/DOT survey personnel locate a granite monument at the southwest corner of Fenton & Alabama, 1 foot below grade, in a bituminous parking lot. The monument appears to be undisturbed.
- 2009 December 10th, Mn/DOT survey personnel take ties to the granite monument and prepare a certificate of location to perpetuate the position of the corner.

Summary and Conclusion:

Mn/DOT survey personnel located the aforesaid granite monument (City Mon. 2545) at the northeast corner of block 11, BROOKLYND and an iron pipe at the northwest corner of block 15, DUNWELL AND SPENCER'S ADDITION TO BROOKLYND. The platted distance in between the two monuments is 1140.00 feet. The measured distance is 1140.02 foot. Mn/DOT survey personnel also located a 3.5" brass disk in a cast iron pipe (USHL MON 450) on the west line of State Street. Said brass monument is ²3 feet below grade, stable & undisturbed. This monument also fits well with the granite monument at the northeast corner of said block 11. I conclude, therefore, that the granite monument is the best evidence of the location of the northeast corner of block 11, BROOKLYND.