

CERTIFICATE OF MONUMENT LOCATION

CITY MON. NO. 2832

OLD INDEX NO. 0494A

BLK Corner in the SE Qtr. of Section 30 Township 29N Range 22W

STATE OF MINNESOTA, County of Ramsey

At the corner location shown on the sketch:

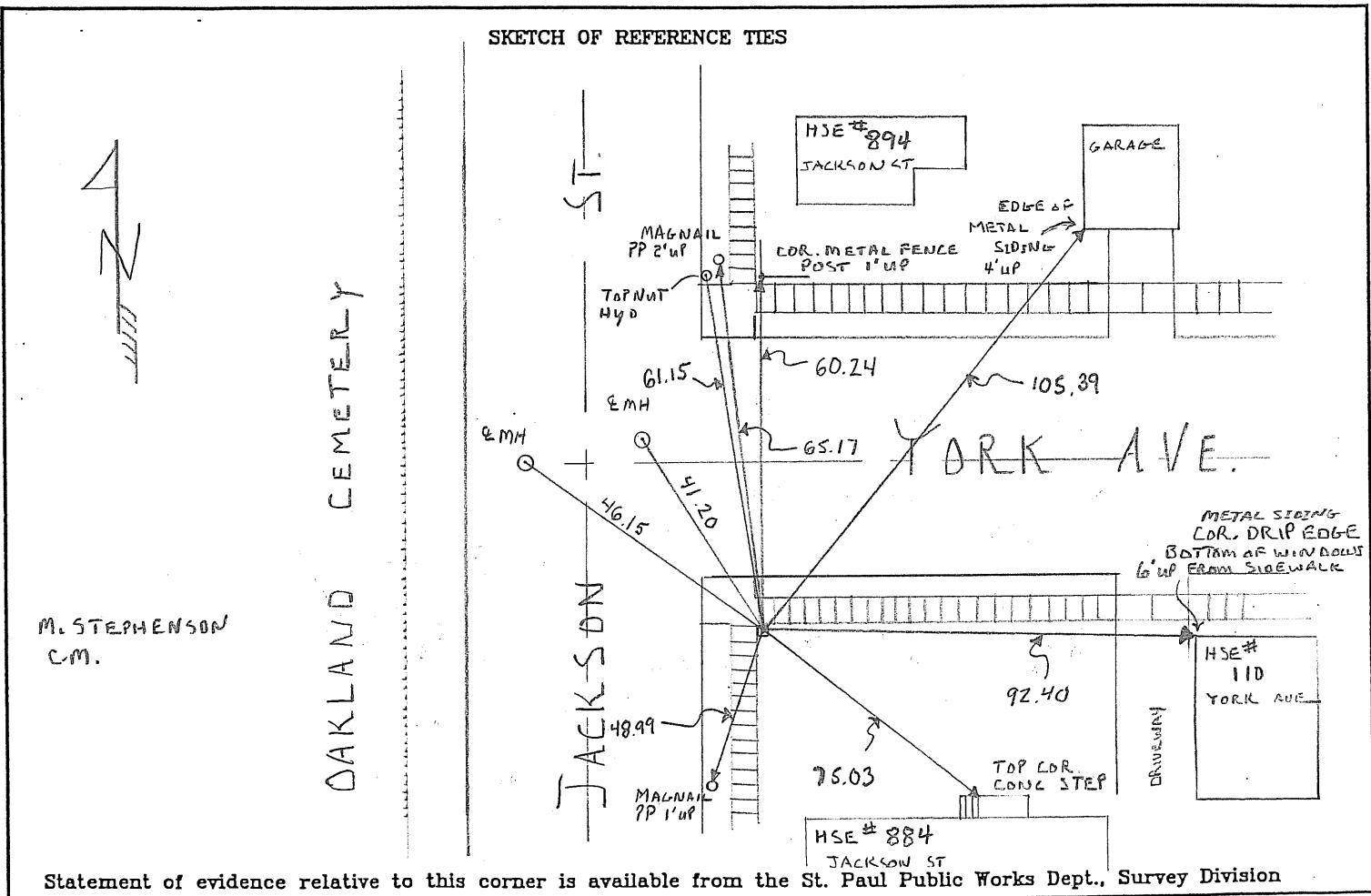
On JAN 21, 2010 found a GM BLK COR .05 ABOVE GRADE SEC YORK AVE!
date

JACKSON ST.

- left monument as found
 lowered monument
 removed monument (explain)

On JAN 21, 2010 placed a GPS - PHOTOS - TIES
date

SKETCH OF REFERENCE TIES



Statement of evidence relative to this corner is available from the St. Paul Public Works Dept., Survey Division

I hereby certify that this document and the data contained herein was prepared by me or under my direct supervision.

[Signature] Feb 3, 2010
SIGNATURE DATE

Registration No. 44880

- Land Surveyor County Surveyor
 Professional Engineer
 Chief Surveyor, City of St. Paul

Office of The County Recorder, County of Ramsey

I hereby certify that this document was filed in the county

Recorders office at _____ M. on the _____ day of _____

County Recorder _____

By _____, Deputy

DOCUMENT NUMBER _____