

CERTIFICATE OF MONUMENT LOCATION

CITY MON. NO. 3504

OLD INDEX NO. 2070

BLK Corner in the NE Qtr. of Section 29 Township 29 Range 23

STATE OF MINNESOTA, County of Ramsey

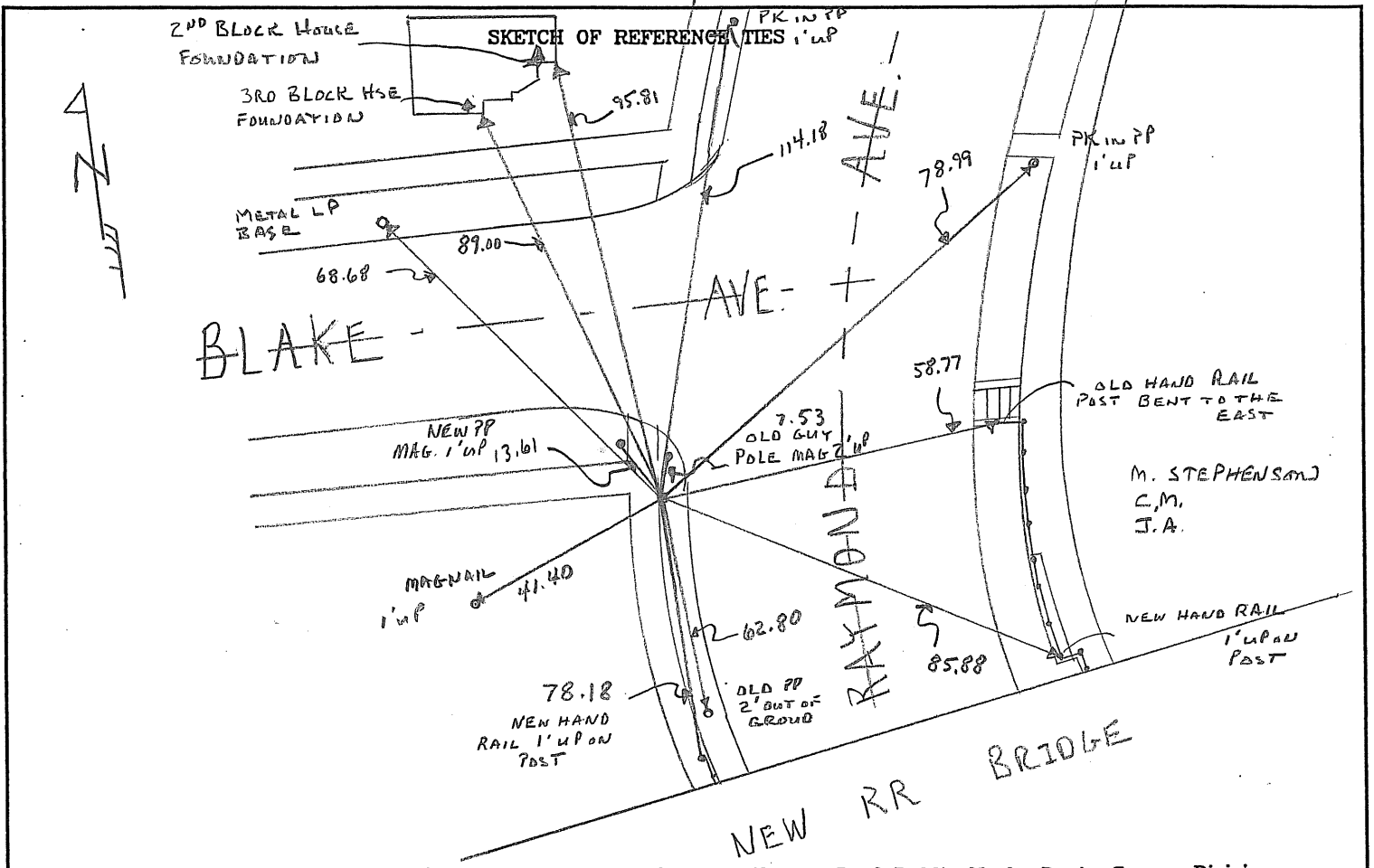
At the corner location shown on the sketch:

On NOV 3, 2009 found X THAT GM BLK LOR WAS REMOVED
date

DURING CONSTRUCTION OF NEW BRIDGE

- left monument as found
 lowered monument
 removed monument (explain)

On NOV. 6, 2009 placed a LIM @ GRADE, FROM FIELD TIES (RE-TIED-PHOTOS)
date



Statement of evidence relative to this corner is available from the St. Paul Public Works Dept., Survey Division

I hereby certify that this document and the data contained herein was prepared by me or under my direct supervision.

[Signature] Feb 3, 2010
SIGNATURE DATE

- Registration No. 44880
- Land Surveyor County Surveyor
 Professional Engineer
 Chief Surveyor, City of St. Paul

Office of The County Recorder, County of Ramsey

I hereby certify that this document was filed in the county
 Recorders office at _____ M. on the _____ day of _____

County Recorder _____
 By _____, Deputy

DOCUMENT NUMBER _____