

# CERTIFICATE OF MONUMENT LOCATION

CITY MON. NO. 3711

OLD INDEX NO. 2431

B/K Corner in the NE Qtr. of Section 04 Township 28 Range 23

STATE OF MINNESOTA, County of Ramsey

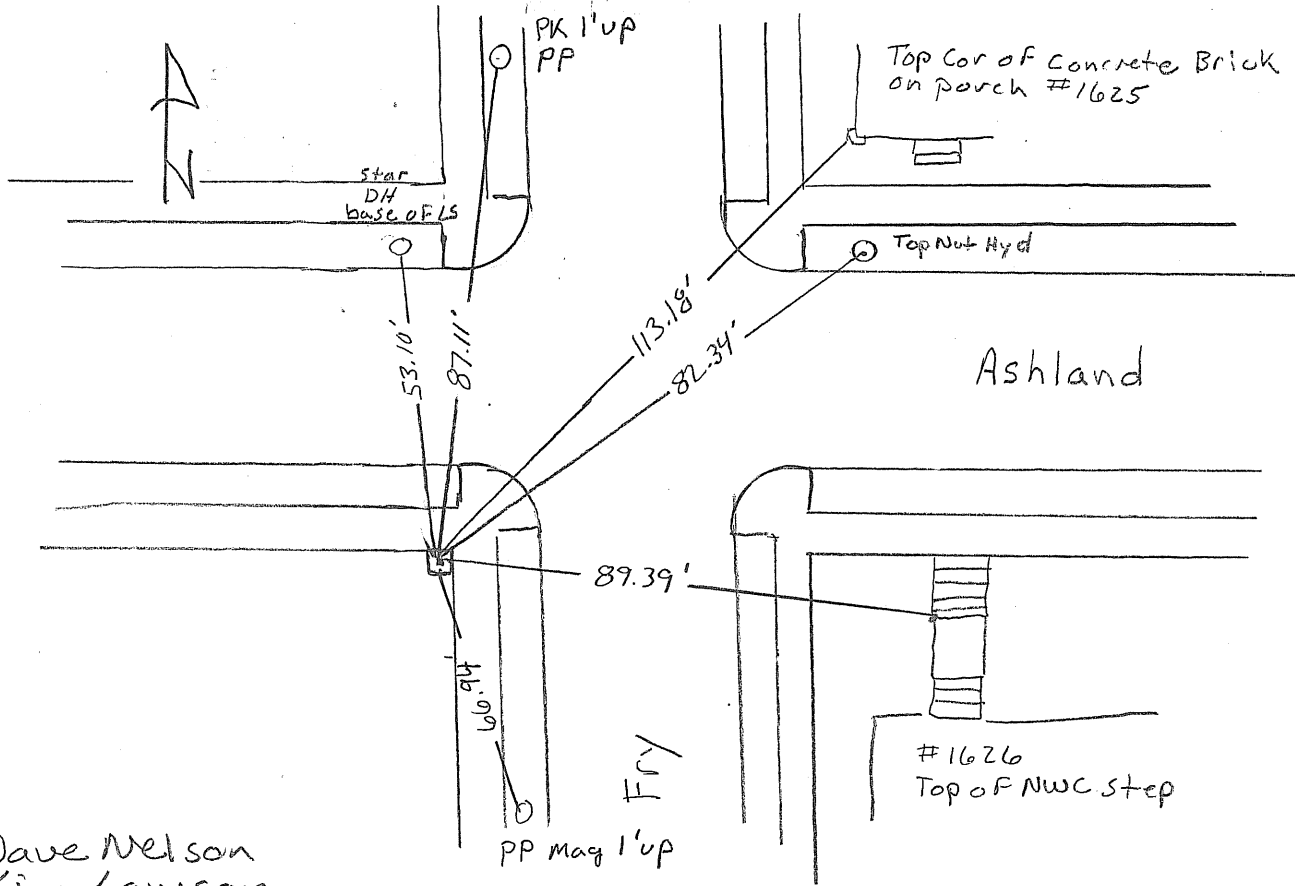
At the corner location shown on the sketch:

On 8-26-09 found a Granite mont (B/K corner) @ Grade  
date

- left monument as found     
  lowered monument     
  removed monument (explain)

On 8-26-09 placed a New ties  
date

SKETCH OF REFERENCE TIES



Dave Nelson  
Kim Lawson

Statement of evidence relative to this corner is available from the St. Paul Public Works Dept., Survey Division

I hereby certify that this document and the data contained herein was prepared by me or under my direct supervision.

[Signature]      Nov 6, 2009  
SIGNATURE      DATE

Registration No. 44880

- Land Surveyor       County Surveyor  
 Professional Engineer  
 Chief Surveyor, City of St. Paul

Office of The County Recorder, County of Ramsey

I hereby certify that this document was filed in the county  
 Recorders office at \_\_\_\_\_ M. on the \_\_\_\_\_ day of \_\_\_\_\_

County Recorder \_\_\_\_\_

By \_\_\_\_\_, Deputy

DOCUMENT NUMBER \_\_\_\_\_