

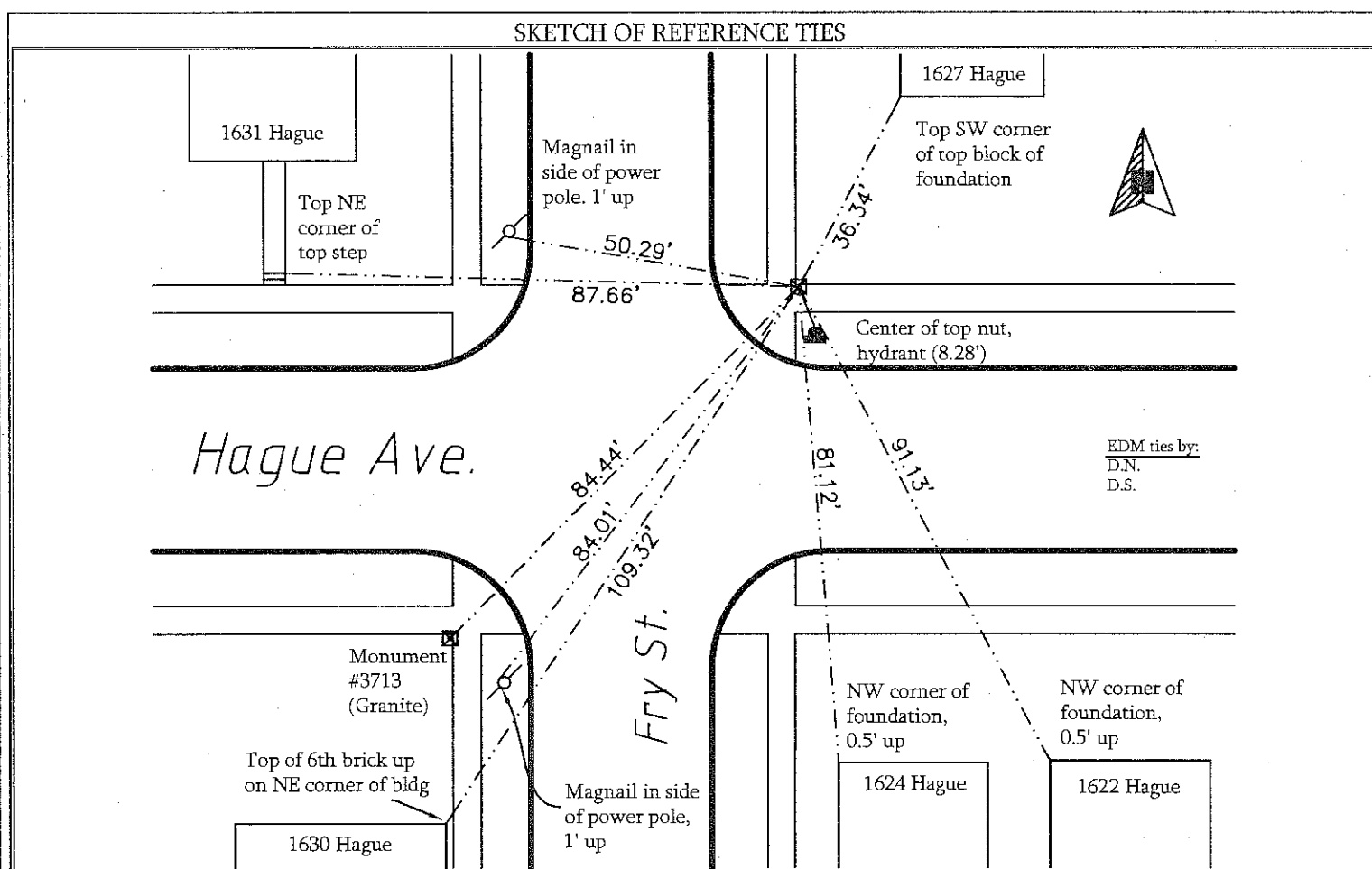
City ID: 3712
Old Index #: 2452

At the corner location shown on the sketch:

On April 3, 2012 found a GM at sidewalk grade.

☒ left monument as found ☐ lowered monument ☐ removed monument (explain)

On _____ placed a



Statement of evidence relative to this corner is available from the St. Paul Public Works Dept., Survey Division

I hereby certify that this document and the data contained herein was prepared by me or under my direct supervision.


 Registration No. 44880 Aug 31, 2012

☐ Land Surveyor ☐ County Surveyor
☐ Professional Engineer
☒ Chief Surveyor, City of St. Paul

Office of the County Recorder, County of Ramsey
I hereby certify that this document was filed in the county
recorders office at _____ M. on the _____ day of _____

County Recorder _____

By _____, Deputy

DOCUMENT NUMBER