

CERTIFICATE OF MONUMENT LOCATION

CITY MON.-NO. 3866

OLD INDEX NO. 2130

Block Corner in the SE Qtr. of Section 33 Township 29 Range 22

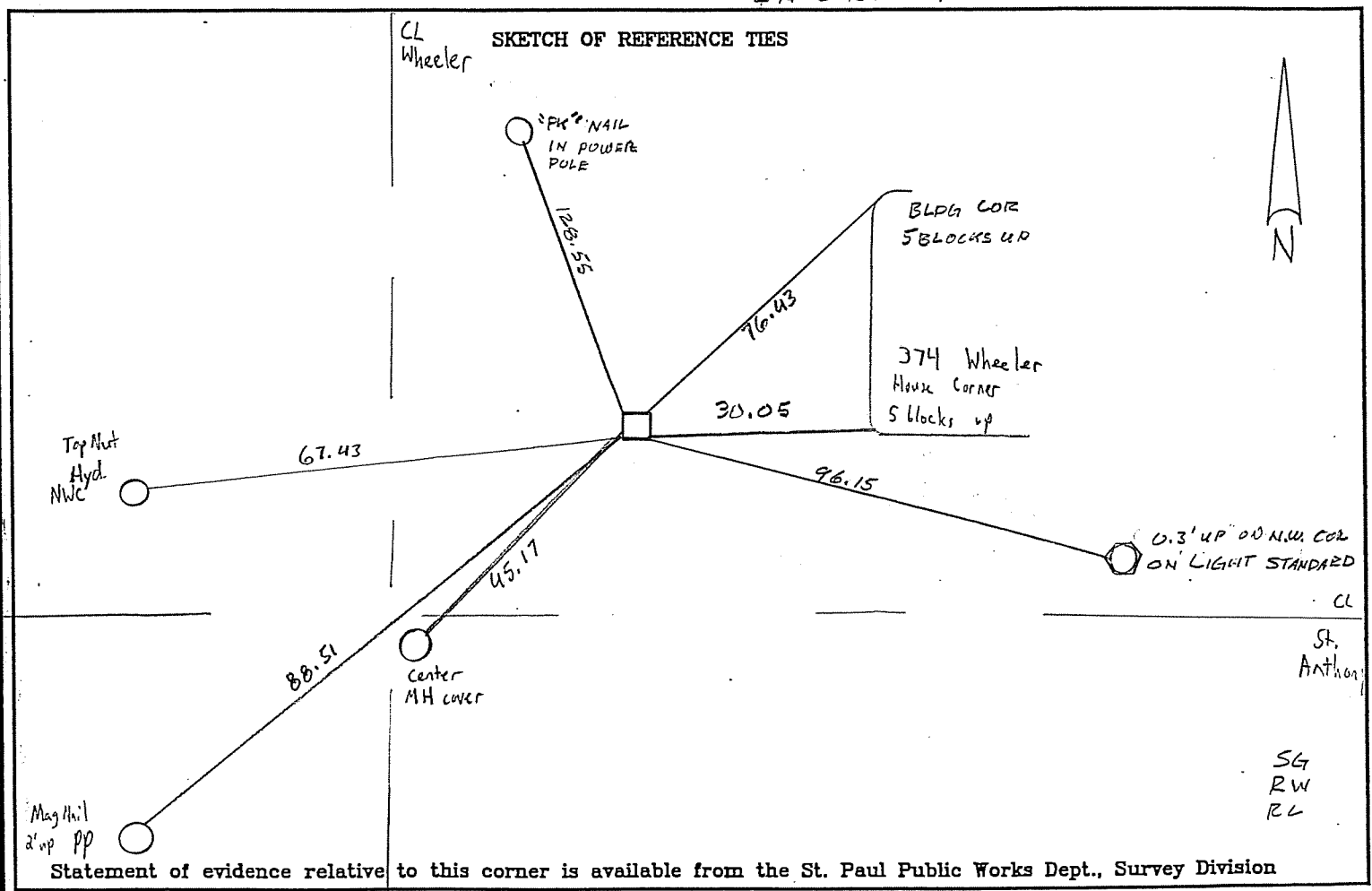
STATE OF MINNESOTA, County of Ramsey

At the corner location shown on the sketch:

On OCT 30, 2008 found a GRANITE MONUMENT WITH DRILL HOLE
date
IN THE NORTHEAST QUADRANT OF THE INTERSECTION OF WHEELER AND ST ANTHONY.

- left monument as found lowered monument removed monument (explain)

On OCT 30, 2008 placed a RE-ROD AND CAP "CITY OF ST PAUL"
date
IN DRILL HOLE



I hereby certify that this document and the data contained herein was prepared by me or under my direct supervision.

Office of The County Recorder, County of Ramsey

I hereby certify that this document was filed in the county

Recorders office at _____ M. on the _____ day of

County Recorder _____

By _____, Deputy

DOCUMENT NUMBER _____

[Signature]
SIGNATURE NOV 12, 2008
DATE

Registration No. 44880

- Land Surveyor County Surveyor
 Professional Engineer
 Chief Surveyor, City of St. Paul