

# CERTIFICATE OF MONUMENT LOCATION

CITY MON. NO. 3873

OLD INDEX NO. 0366

BLK Corner in the SE Qtr. of Section 30 Township 29N Range 22W

STATE OF MINNESOTA, County of Ramsey

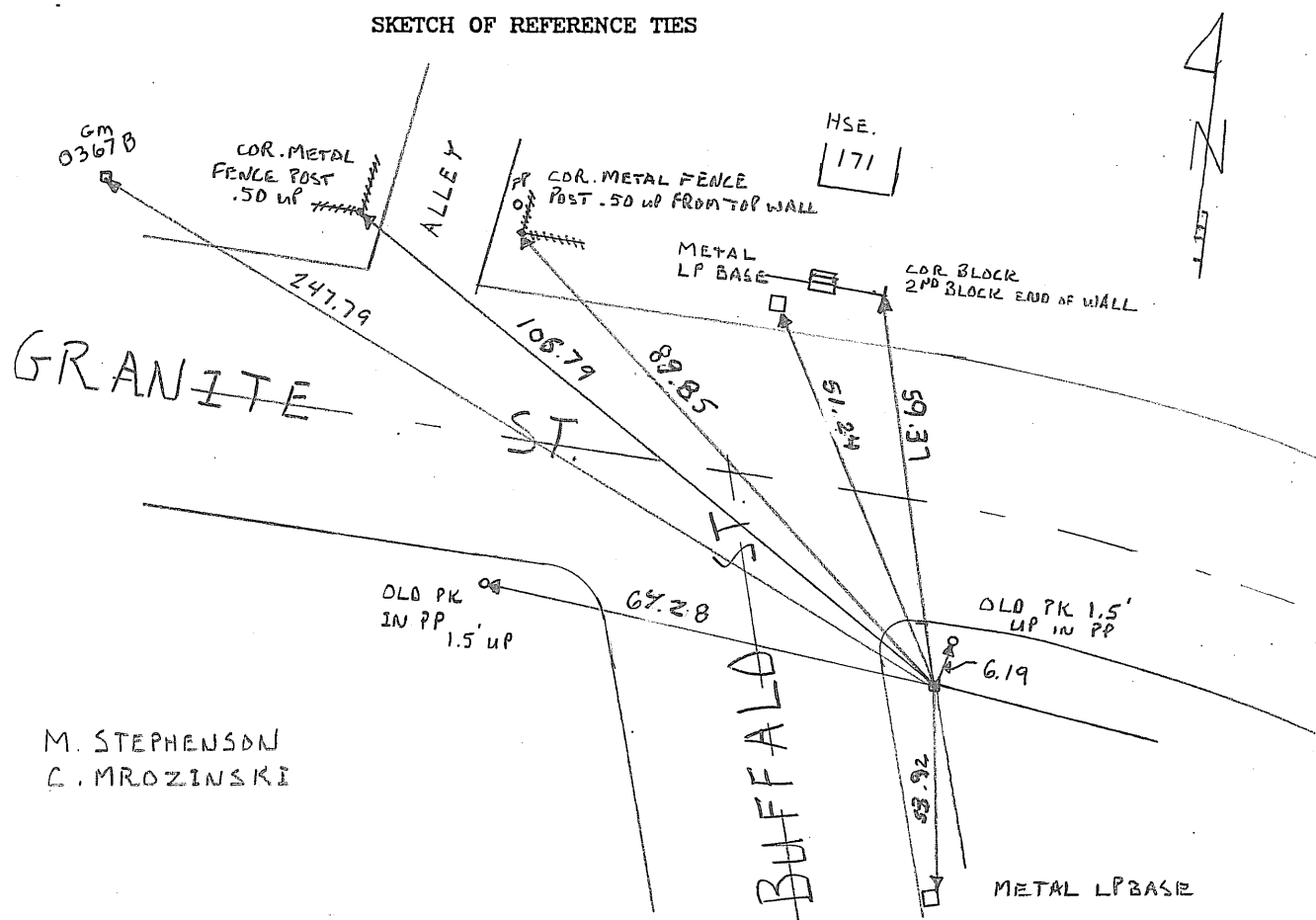
At the corner location shown on the sketch:

On Nov. 30, 2009 found a Gm BLK COR SEC BUFFALO ST  
date  
GRANITE ST. 1.0' BELOW SIDEWALK GRADE

- left monument as found       lowered monument       removed monument (explain)

On DEC 1, 2009 placed PHOTOS - GPS - TIES  
date

SKETCH OF REFERENCE TIES



Statement of evidence relative to this corner is available from the St. Paul Public Works Dept., Survey Division

I hereby certify that this document and the data contained herein was prepared by me or under my direct supervision.

[Signature] Feb 3, 2010  
SIGNATURE DATE

- Registration No. 44880
- Land Surveyor       County Surveyor
- Professional Engineer
- Chief Surveyor, City of St. Paul

Office of The County Recorder, County of Ramsey

I hereby certify that this document was filed in the county  
 Recorders office at \_\_\_\_\_ M. on the \_\_\_\_\_ day of \_\_\_\_\_

County Recorder \_\_\_\_\_

By \_\_\_\_\_, Deputy

DOCUMENT NUMBER \_\_\_\_\_