

CERTIFICATE OF MONUMENT LOCATION

CITY MON. NO. 3879

OLD INDEX NO. --KT

Corner in the _____ Qtr. of Section 11 Township 28N Range 22W

STATE OF MINNESOTA, County of Ramsey

At the corner location shown on the sketch:

On 9-2006 found a Broken Cast Iron Monument

date

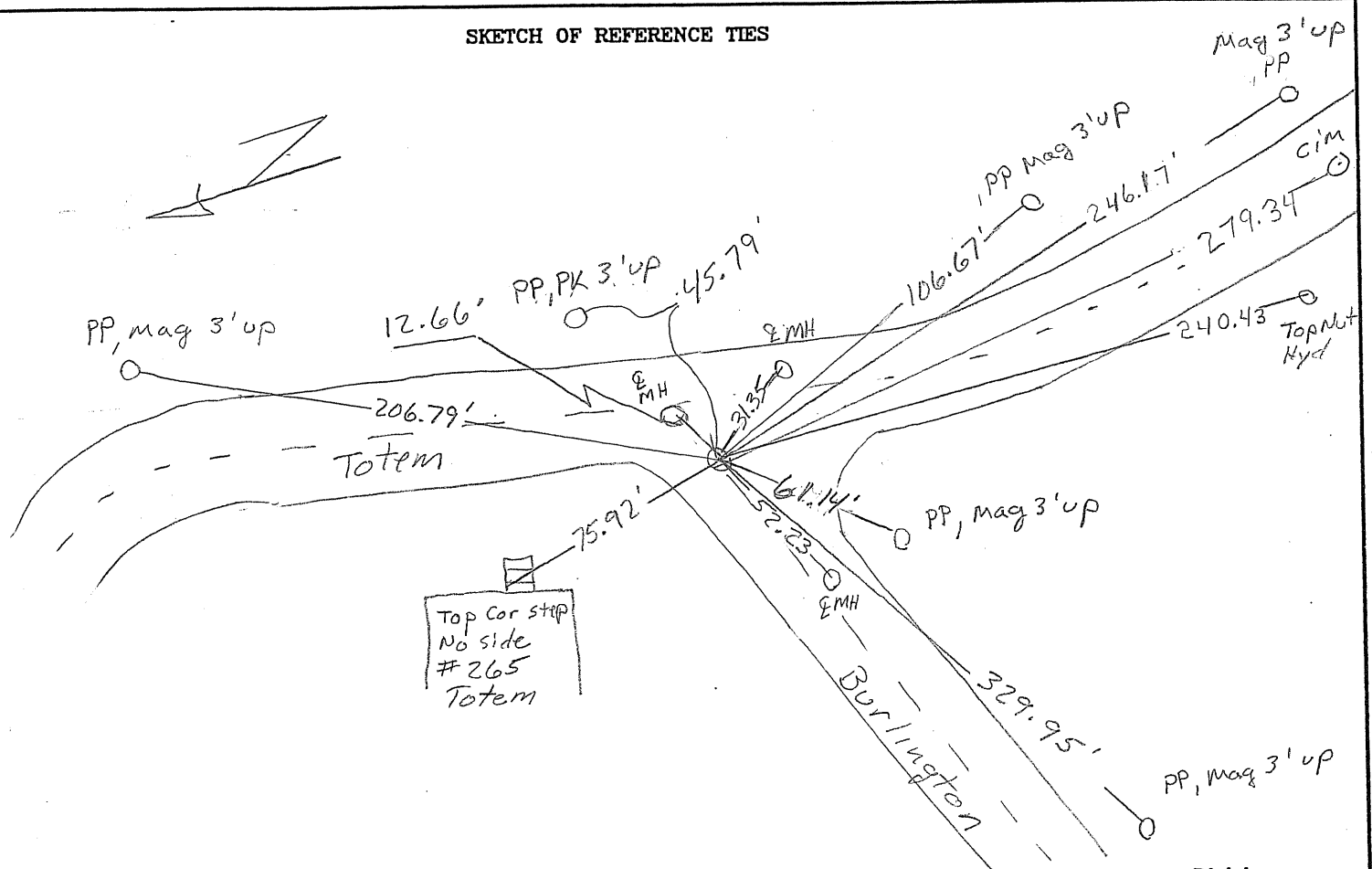
Remove For New Construction of totem Rd (EDM Ties)

- left monument as found lowered monument removed monument (explain)

On 8-28-08 placed a Cast Iron Monument

date

SKETCH OF REFERENCE TIES



Statement of evidence relative to this corner is available from the St. Paul Public Works Dept., Survey Division

I hereby certify that this document and the data contained herein was prepared by me or under my direct supervision.

[Signature] Oct 9, 2009
SIGNATURE DATE

- Registration No. 44880
- Land Surveyor County Surveyor
- Professional Engineer
- Chief Surveyor, City of St. Paul

Office of The County Recorder, County of Ramsey

I hereby certify that this document was filed in the county

Recorders office at _____ M. on the _____ day of _____

County Recorder _____

By _____, Deputy

DOCUMENT NUMBER _____