

CERTIFICATE OF MONUMENT LOCATION

City ID: 3963

Old Index #: 0239

BLOCK Corner of Section 29 Township 29 Range 22, 4th P.M.
STATE OF MINNESOTA, County of Ramsey
At the corner location shown on the sketch:

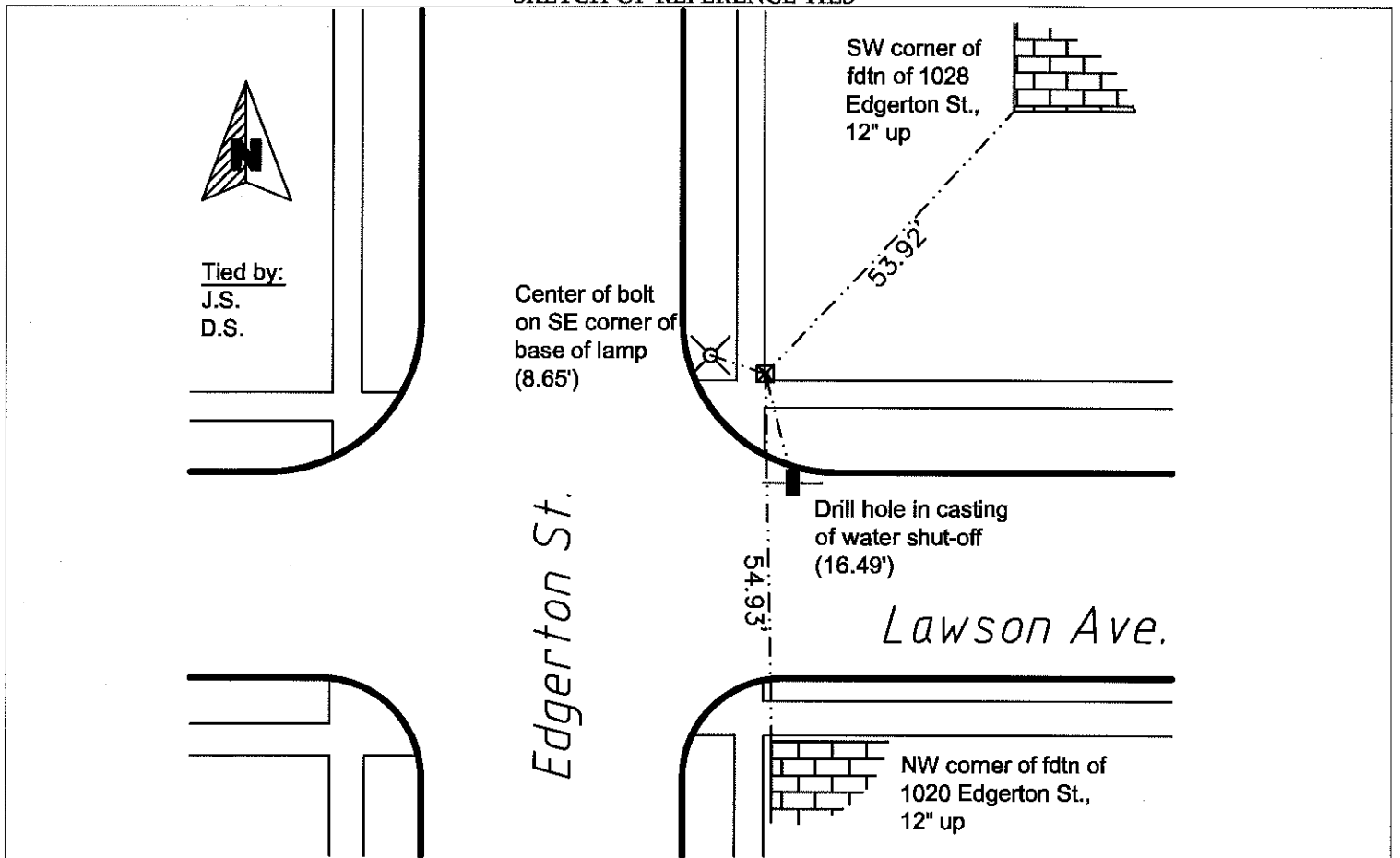
On July 27, 2011 found a GM 2.6' below appx old sidewalk grade.

Note: a cut granite stone was found nearby, lying above and to east of mon't.

left monument as found lowered monument removed monument (explain)

On July 27, 2011 placed a CIM above GM using ties shown below.

SKETCH OF REFERENCE TIES



Statement of evidence relative to this corner is available from the St. Paul Public Works Dept., Survey Division

I hereby certify that this document and the data contained herein was prepared by me or under my direct supervision.

[Signature] Aug 17, 2012

Registration No. 44880
 Land Surveyor County Surveyor
 Professional Engineer
 Chief Surveyor, City of St. Paul

Office of the County Recorder, County of Ramsey
 I hereby certify that this document was filed in the county recorders office at _____ M. on the _____ day of _____

County Recorder _____
 By _____, Deputy

DOCUMENT NUMBER _____