

# CERTIFICATE OF MONUMENT LOCATION

CITY MON. NO. 4028

OLD INDEX NO. 0297

BLK Corner in the NW Qtr. of Section 01 Township 28 Range 23

STATE OF MINNESOTA, County of Ramsey

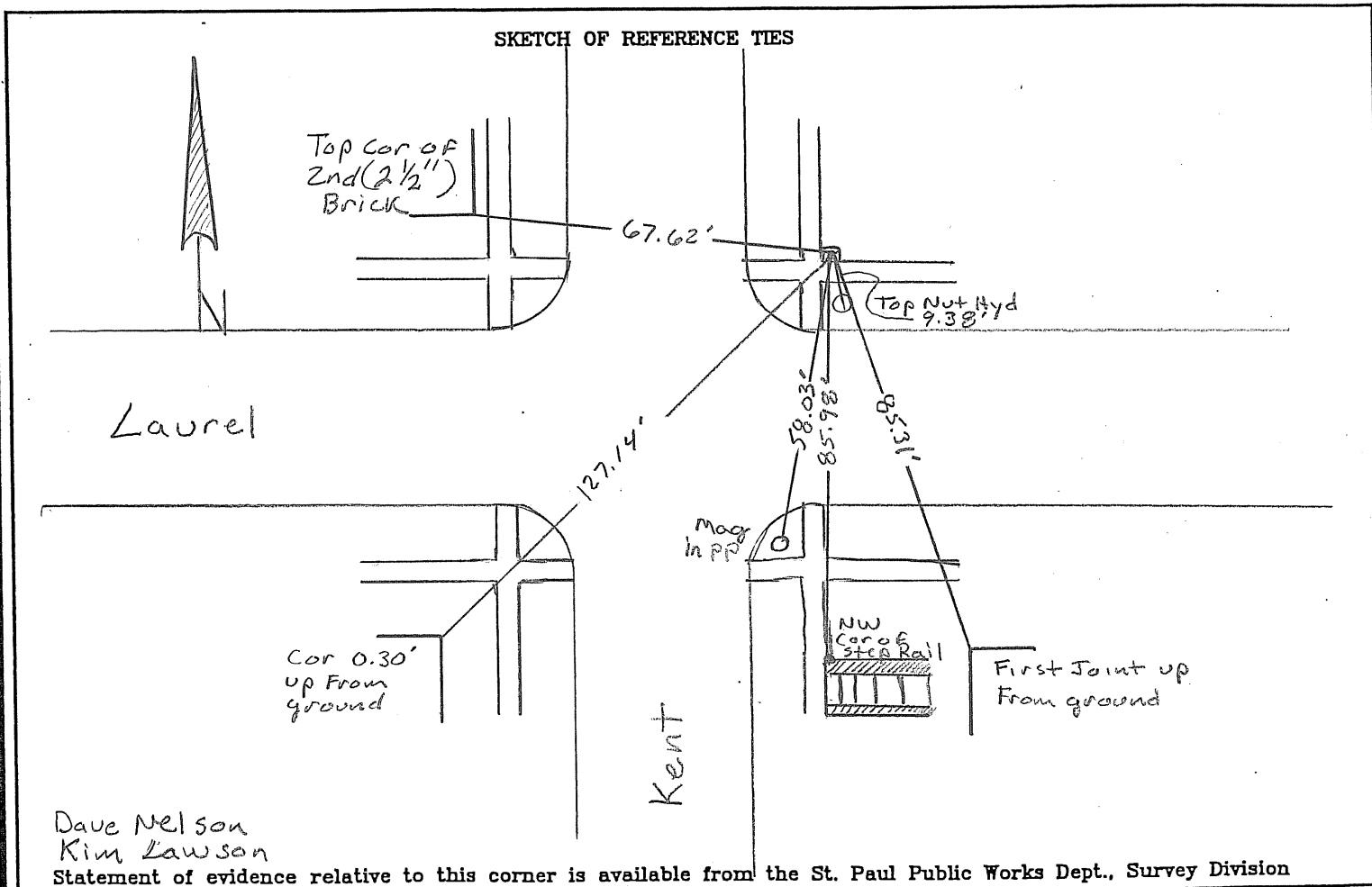
At the corner location shown on the sketch:

On 11-02-2009 found a Granite Monument (BLK Cor @ Grade)  
date

left monument as found       lowered monument       removed monument (explain)

On 11-02-2009 placed a New ties  
date

SKETCH OF REFERENCE TIES



Dave Nelson  
Kim Lawson

I hereby certify that this document and the data contained herein was prepared by me or under my direct supervision.

[Signature]      Nov 6, 2009  
SIGNATURE      DATE

Registration No. 44880

- Land Surveyor       County Surveyor  
 Professional Engineer  
 Chief Surveyor, City of St. Paul

Office of The County Recorder, County of Ramsey

I hereby certify that this document was filed in the county

Recorders office at \_\_\_\_\_ M. on the \_\_\_\_\_ day of \_\_\_\_\_

County Recorder \_\_\_\_\_

By \_\_\_\_\_, Deputy

DOCUMENT NUMBER \_\_\_\_\_