

# CERTIFICATE OF MONUMENT LOCATION

CITY MON. NO. 4032

OLD INDEX NO. 0301

BIK Corner in the NW Qtr. of Section 01 Township 28 Range 23

STATE OF MINNESOTA, County of Ramsey

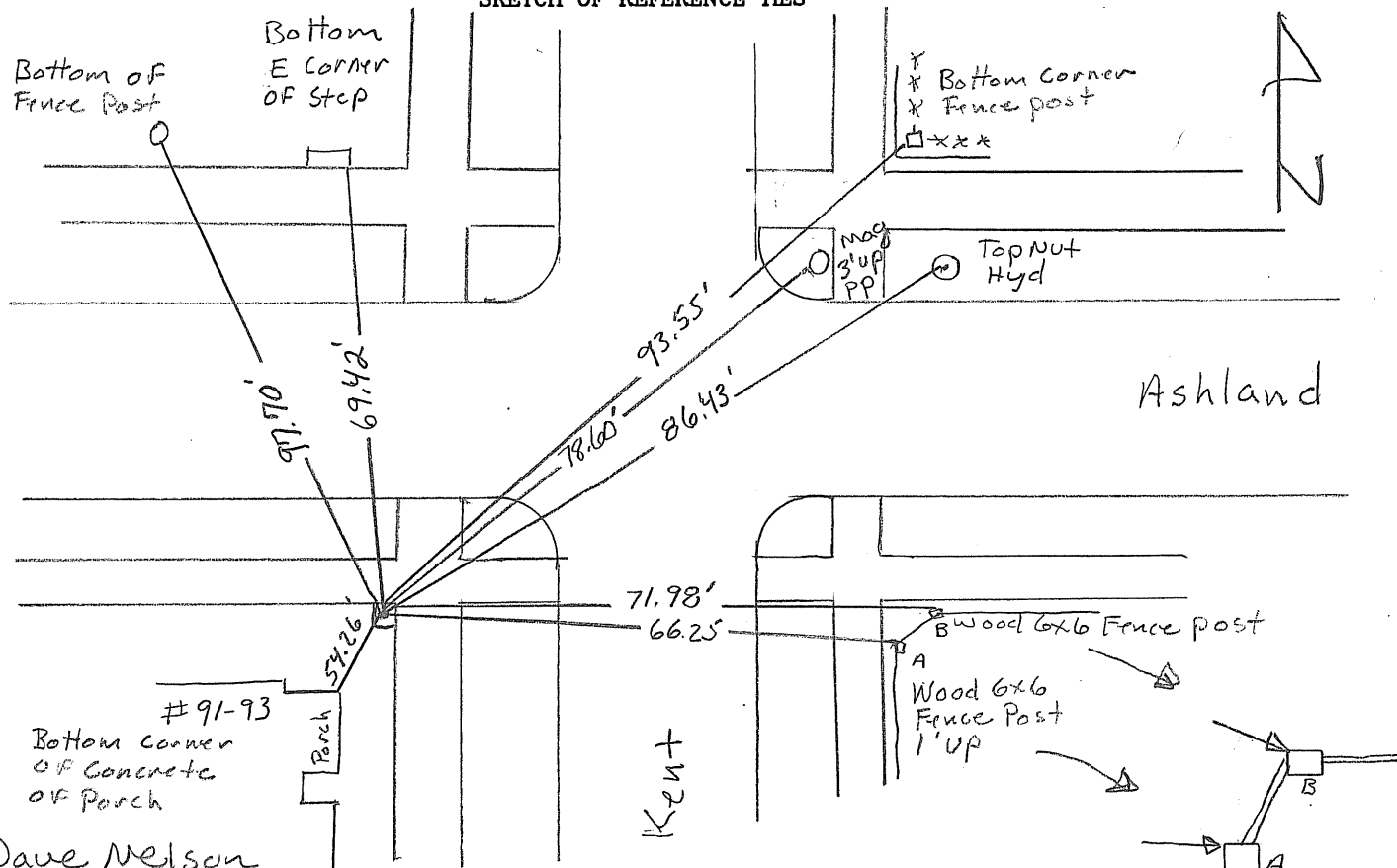
At the corner location shown on the sketch:

On 8-26-09 found a Granite Mont. (BIK Corner) @ Gable  
date

left monument as found       lowered monument       removed monument (explain)

On 8-26-09 placed a New ties  
date

SKETCH OF REFERENCE TIES



Dave Nelson  
Kim Lawson

Statement of evidence relative to this corner is available from the St. Paul Public Works Dept., Survey Division

I hereby certify that this document and the data contained herein was prepared by me or under my direct supervision.

[Signature] Nov 6, 2009  
SIGNATURE DATE

Registration No. 44880

- Land Surveyor       County Surveyor  
 Professional Engineer  
 Chief Surveyor, City of St. Paul

Office of The County Recorder, County of Ramsey

I hereby certify that this document was filed in the county  
 Recorders office at \_\_\_\_\_ M. on the \_\_\_\_\_ day of \_\_\_\_\_

County Recorder \_\_\_\_\_

By \_\_\_\_\_, Deputy

DOCUMENT NUMBER \_\_\_\_\_