

# CERTIFICATE OF MONUMENT LOCATION

City ID: 4258  
Old Index #: 0491A

BLOCK Corner of Section 30 Township 29 Range 22, 4th P.M.  
STATE OF MINNESOTA, County of Ramsey  
At the corner location shown on the sketch:

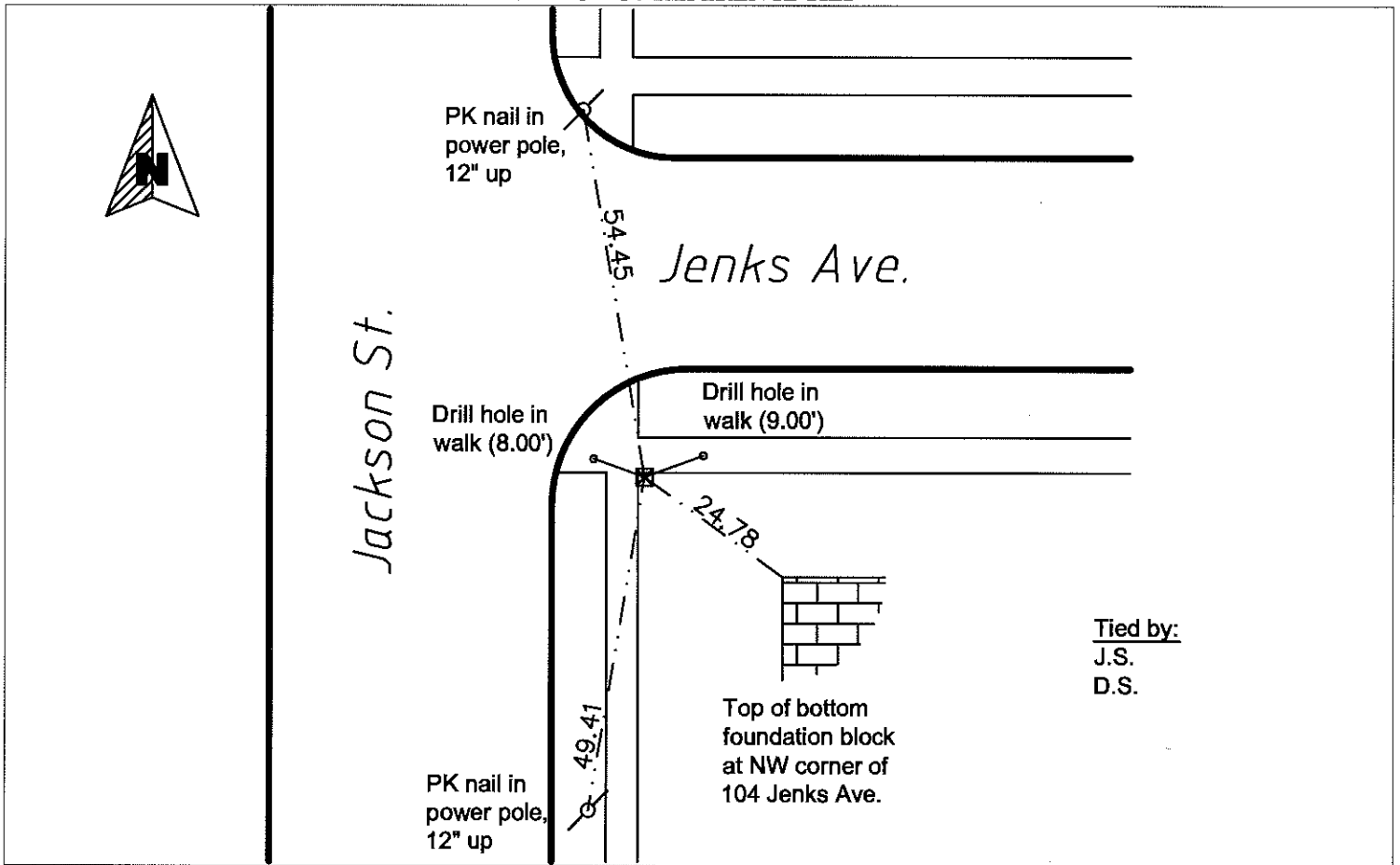
On June 27, 2011 found a GM 0.85 ft. below sidewalk grade.

Note: Mon't tilted 8° N and 13° E. Ties are to center hole of mon't as tilted.

left monument as found       lowered monument       removed monument (explain)

On \_\_\_\_\_ placed a \_\_\_\_\_

SKETCH OF REFERENCE TIES



Tied by:  
J.S.  
D.S.

Statement of evidence relative to this corner is available from the St. Paul Public Works Dept., Survey Division

I hereby certify that this document and the data contained herein was prepared by me or under my direct supervision.

*[Signature]* Aug 17, 2012  
Registration No. 44880

- Land Surveyor       County Surveyor  
 Professional Engineer  
 Chief Surveyor, City of St. Paul

Office of the County Recorder, County of Ramsey  
I hereby certify that this document was filed in the county recorders office at \_\_\_\_\_ M. on the \_\_\_\_\_ day of \_\_\_\_\_

County Recorder \_\_\_\_\_

By \_\_\_\_\_, Deputy

DOCUMENT NUMBER \_\_\_\_\_