

# CERTIFICATE OF MONUMENT LOCATION

City ID: 4451

Old Index #: 0678

BLOCK Corner of Section 8 Township 28 Range 22, 4th P.M.

STATE OF MINNESOTA, County of Ramsey

At the corner location shown on the sketch:

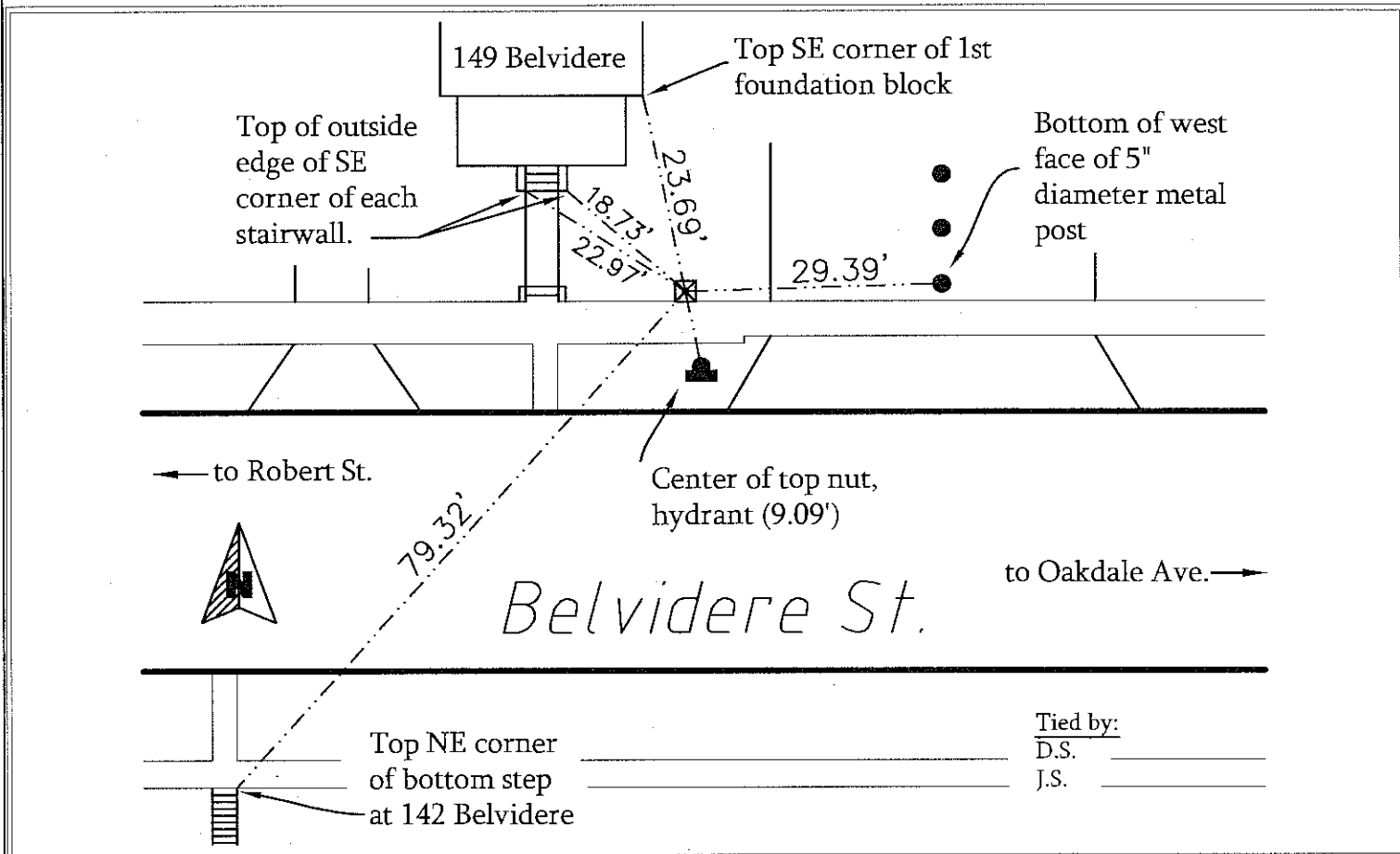
On Nov. 8, 2012 found a GM 0.4' below sidewalk grade.

Note: Location is NW Cor of Belvidere St & Riverview Ave (vacated)

left monument as found       lowered monument       removed monument (explain)

On \_\_\_\_\_ placed a \_\_\_\_\_

SKETCH OF REFERENCE TIES



Statement of evidence relative to this corner is available from the St. Paul Public Works Dept., Survey Division

I hereby certify that this document and the data contained herein was prepared by me or under my direct supervision.

*[Signature]*  
Dec 24, 2012  
Registration No. 44860

- Land Surveyor       County Surveyor
- Professional Engineer
- Chief Surveyor, City of St. Paul

Office of the County Recorder, County of Ramsey  
I hereby certify that this document was filed in the county recorders office at \_\_\_\_\_ M. on the \_\_\_\_\_ day of \_\_\_\_\_

County Recorder \_\_\_\_\_

By \_\_\_\_\_, Deputy

DOCUMENT NUMBER \_\_\_\_\_