

CERTIFICATE OF MONUMENT LOCATION

CITY MON. NO. 4627

OLD INDEX NO. 0843

BIK Corner in the NW Qtr. of Section 04 Township 28 Range 23

STATE OF MINNESOTA, County of Ramsey

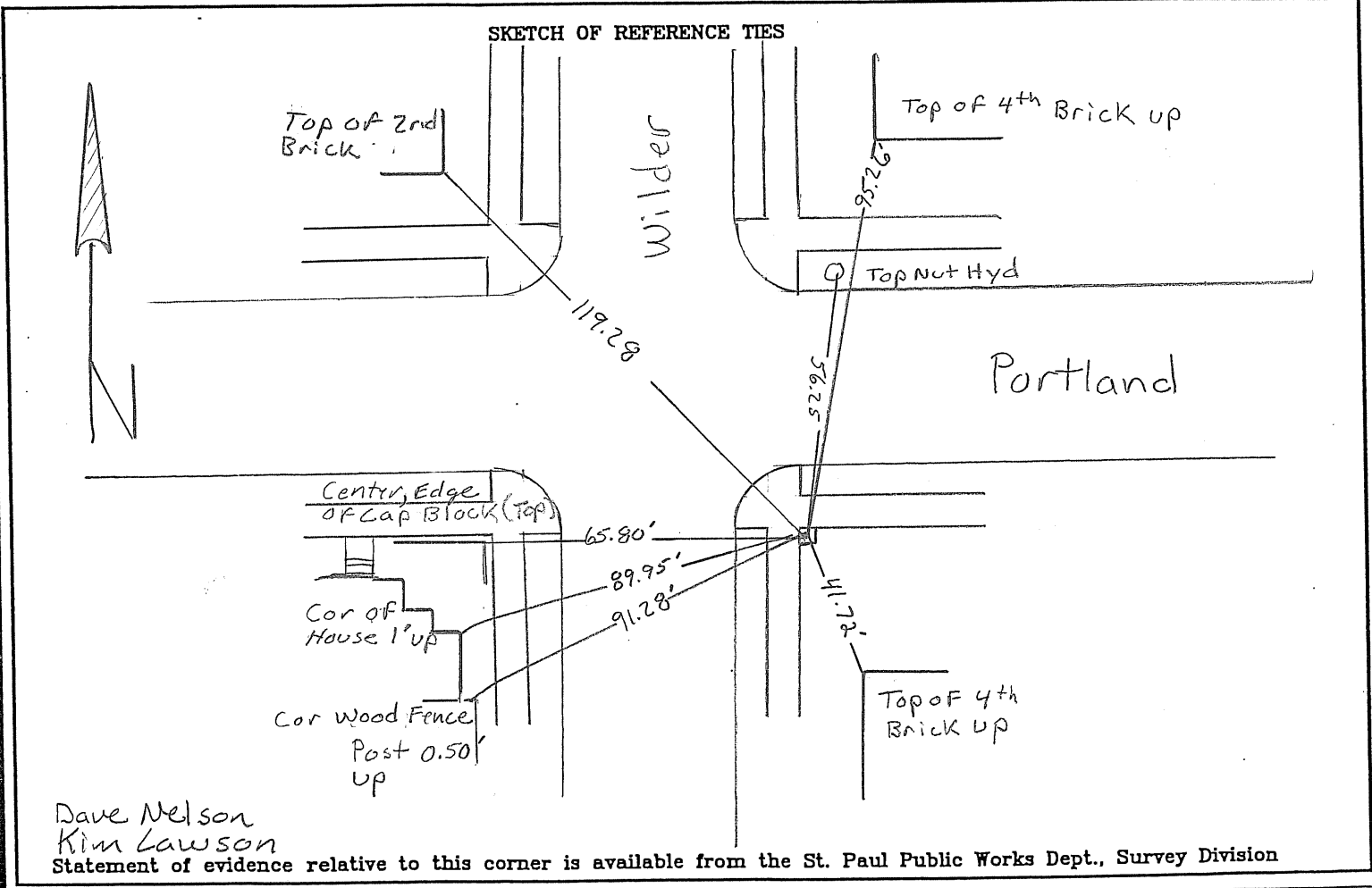
At the corner location shown on the sketch:

On 10-29-2009 found a Granite Mont. (BIK Cor)
date

left monument as found lowered monument removed monument (explain)

On 10-29-2009 placed a New ties
date

SKETCH OF REFERENCE TIES



Dave Nelson
Kim Lawson

Statement of evidence relative to this corner is available from the St. Paul Public Works Dept., Survey Division

I hereby certify that this document and the data contained herein was prepared by me or under my direct supervision.

[Signature]

Nov 6, 2009
DATE

Registration No. 44880

- Land Surveyor County Surveyor
- Professional Engineer
- Chief Surveyor, City of St. Paul

Office of The County Recorder, County of Ramsey

I hereby certify that this document was filed in the county
 Recorders office at _____ M. on the _____ day of _____

County Recorder _____

By _____, Deputy

DOCUMENT NUMBER _____