

CERTIFICATE OF MONUMENT LOCATION

City ID: 5008

Old Index #: 1242

Block Corner of Section 27 Township 29 Range 22, 4th P.M.

STATE OF MINNESOTA, County of Ramsey

At the corner location shown on the sketch:

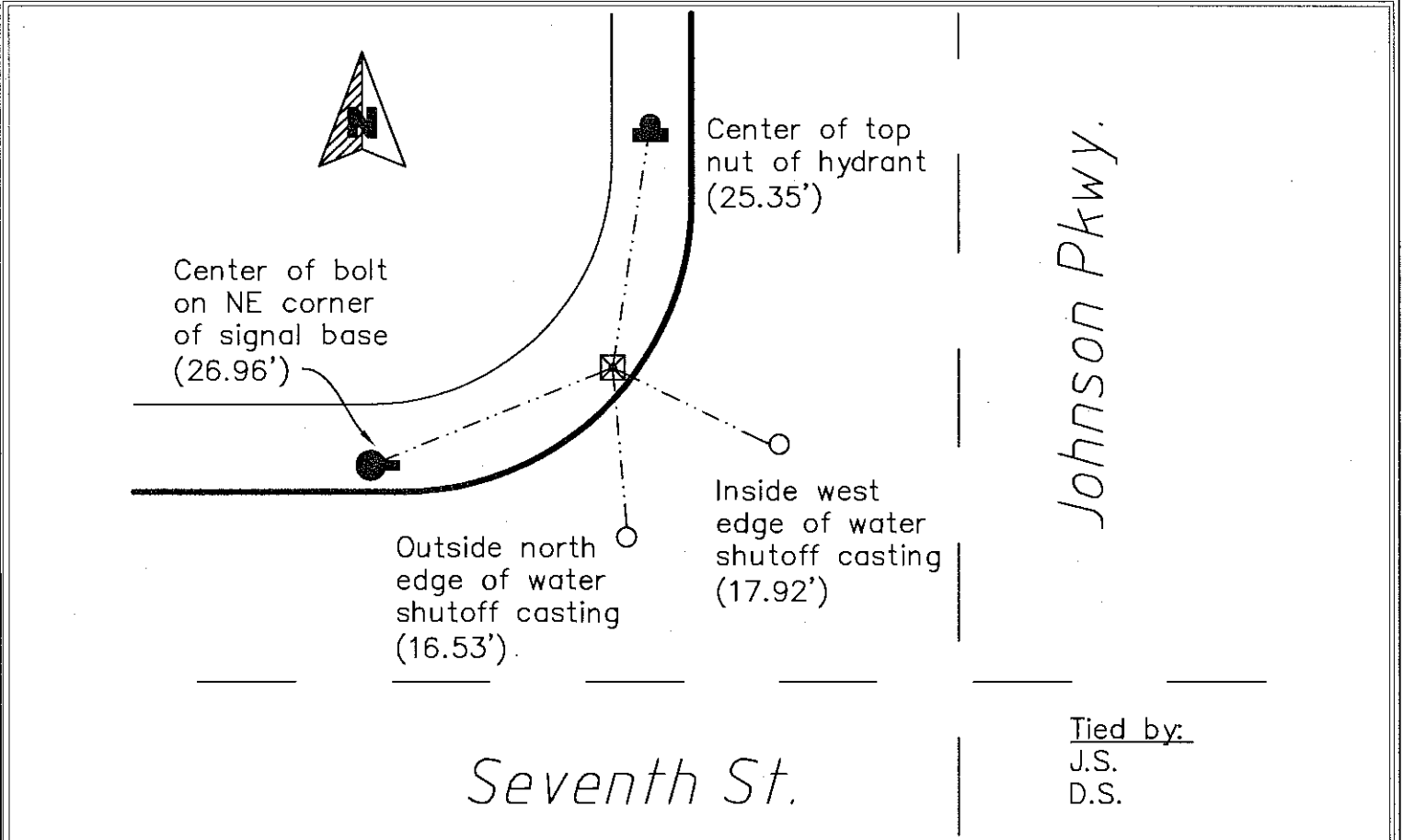
On May 16, 2012 found a brass plug in curb at walkout on NW corner

Seventh & Johnson Pkwy.

left monument as found lowered monument removed monument (explain)

On _____ placed a _____

SKETCH OF REFERENCE TIES



Johnson Pkwy.

Tied by:
J.S.
D.S.

Statement of evidence relative to this corner is available from the St. Paul Public Works Dept., Survey Division

I hereby certify that this document and the data contained herein was prepared by me or under my direct supervision.

[Signature] Aug 31, 2012
Registration No. 44880

- Land Surveyor County Surveyor
- Professional Engineer
- Chief Surveyor, City of St. Paul

Office of the County Recorder, County of Ramsey
I hereby certify that this document was filed in the county recorders office at _____ M. on the _____ day of _____

County Recorder _____

By _____, Deputy

DOCUMENT NUMBER _____