

CERTIFICATE OF MONUMENT LOCATION

City ID: 5008

Old Index #: 1242

Block Corner of Section 28 Township 29 Range 22, 4th P.M.

STATE OF MINNESOTA, County of Ramsey

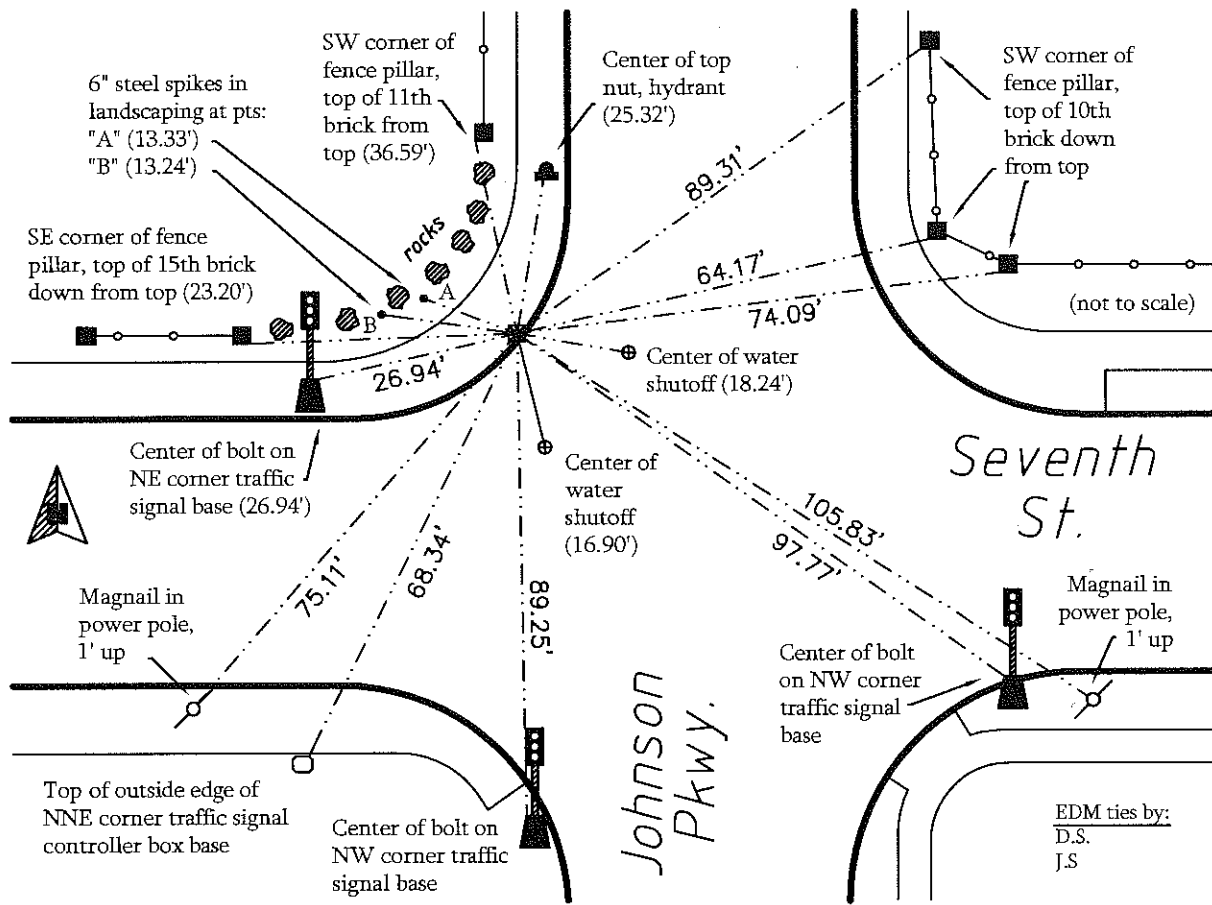
At the corner location shown on the sketch:

On Aug 12, 2014 found a brass plug set to grade in curbline.

left monument as found lowered monument removed monument (explain)

On _____ placed a _____

SKETCH OF REFERENCE TIES



Statement of evidence relative to this corner is available from the St. Paul Public Works Dept., Survey Division

I hereby certify that this document and the data contained herein was prepared by me or under my direct supervision.

[Signature] MAY 21, 2015
Registration No. 44880

- Land Surveyor County Surveyor
 Professional Engineer
 Chief Surveyor, City of St. Paul

Office of the County Recorder, County of Ramsey
 I hereby certify that this document was filed in the county recorders office at _____ M. on the _____ day of _____

County Recorder _____

By _____, Deputy

DOCUMENT NUMBER _____