

CERTIFICATE OF MONUMENT LOCATION

CITY MON. NO. 5539

OLD INDEX NO. 1841

GM BLK Corner in the SE Qtr. of Section 30 Township 29N Range 22W

STATE OF MINNESOTA, County of Ramsey

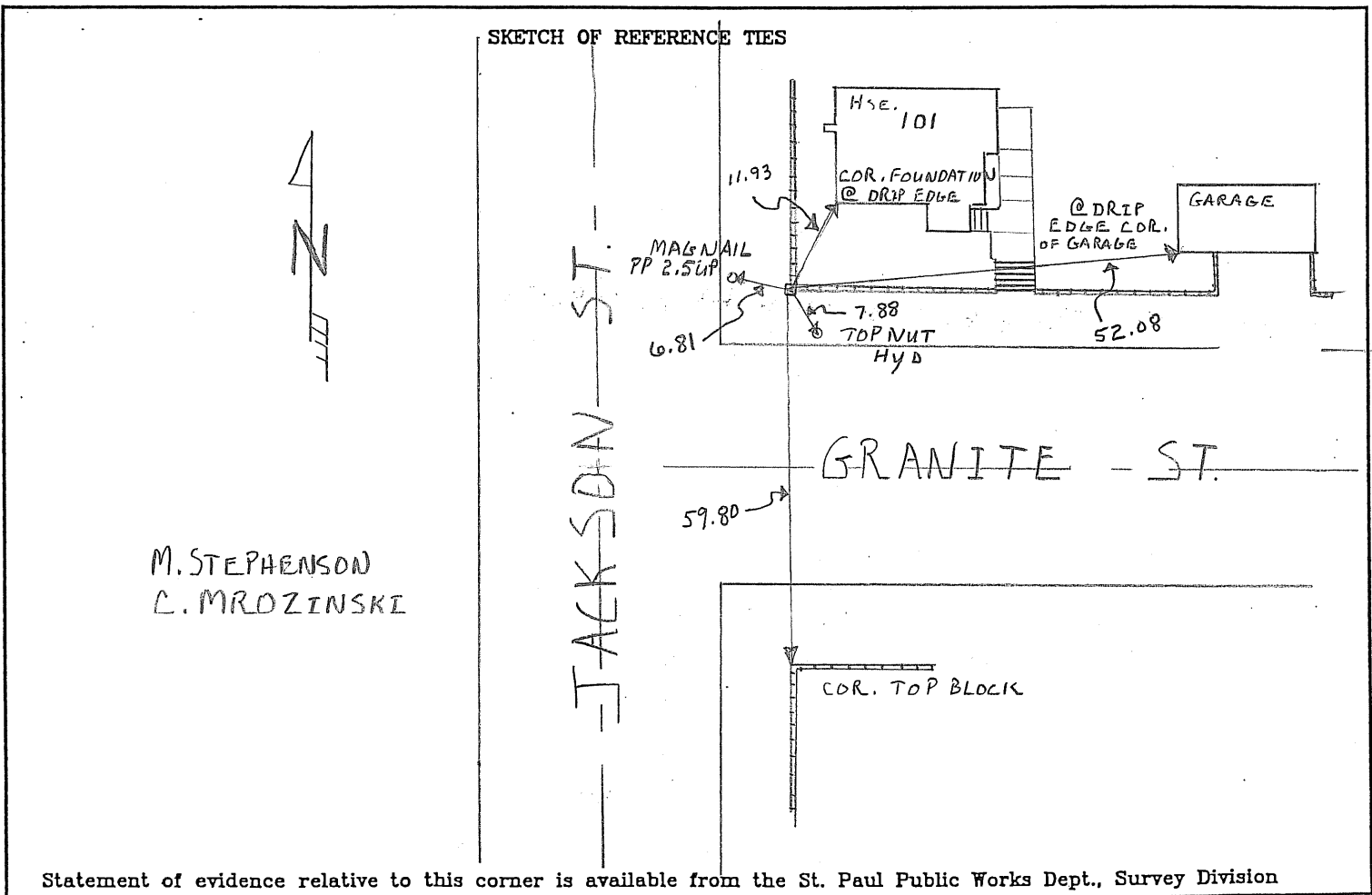
At the corner location shown on the sketch:

On DEC. 22, 2009 found a GM BLK COR. NEC JACKSON & GRANITE
date

.45 BELOW SIDEWALK GRADE (GM IS UNDER BLOCK WALL) SIZE OF GM .60 X .60

- left monument as found
 lowered monument
 removed monument (explain)

On DEC. 23, 2009 placed a GPS - PHOTOS - TIES
date



I hereby certify that this document and the data contained herein was prepared by me or under my direct supervision.


 SIGNATURE _____ DATE Jan 7, 2010

- Registration No. 44880
- Land Surveyor County Surveyor
 Professional Engineer
 Chief Surveyor, City of St. Paul

Office of The County Recorder, County of Ramsey

I hereby certify that this document was filed in the county
 Recorders office at _____ M. on the _____ day of _____

County Recorder _____

By _____, Deputy

DOCUMENT NUMBER _____