

CERTIFICATE OF MONUMENT LOCATION

CITY MON. NO. 5783

OLD INDEX NO. 2149

BLK Corner in the SE Qtr. of Section 33 Township 29N Range 23W

STATE OF MINNESOTA, County of Ramsey

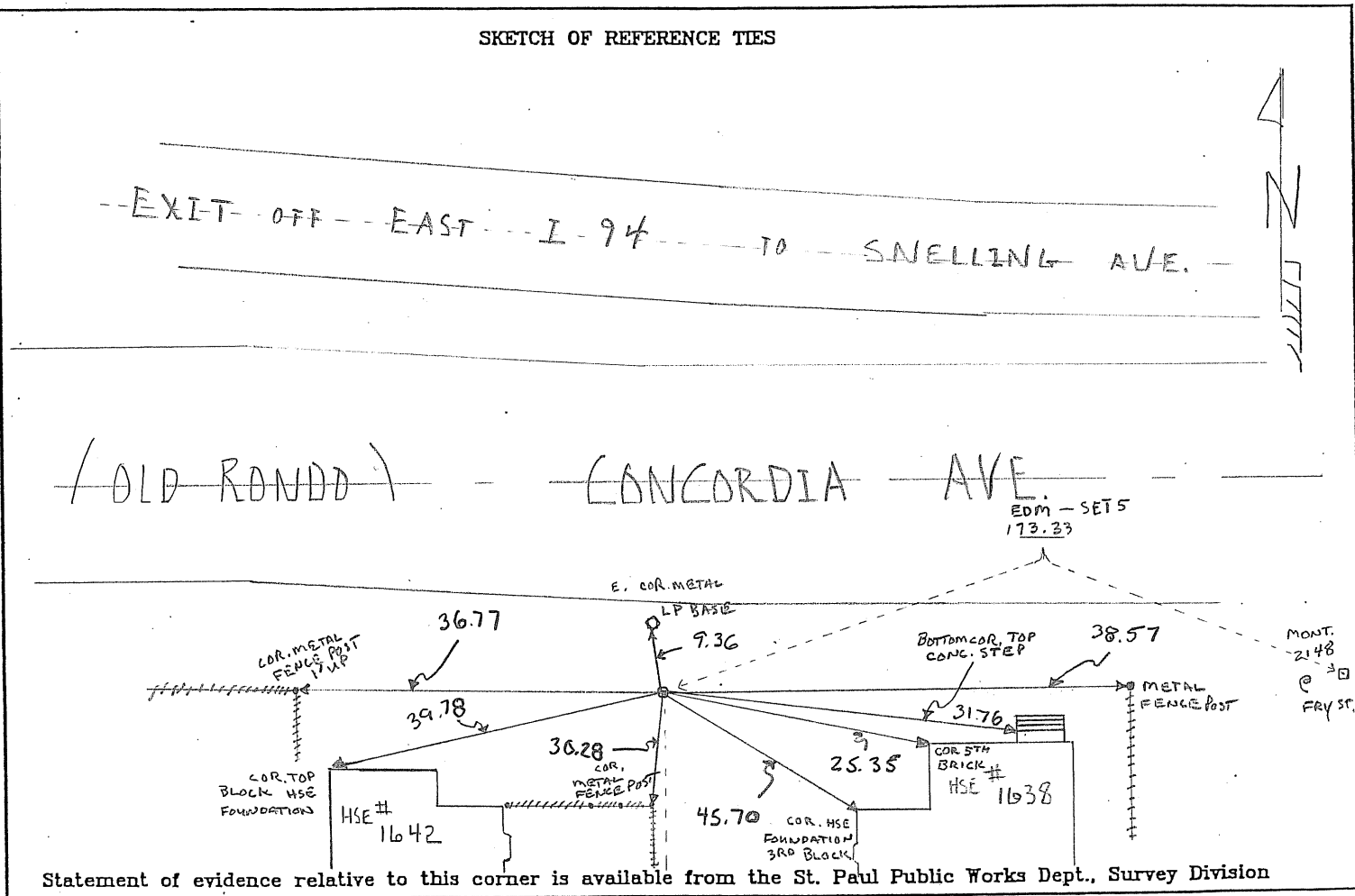
At the corner location shown on the sketch:

On MARCH 11, 2010 found a GM .35 BELOW SIDEWALK GRADE
date MONT. S. LINE RONDO 1 WEST OF FRY ON THE
S.D. SIDE OF CONCORDIA AVE. BETWEEN HSE. 1642 AND 1638 (OLD RONDO) W. LINE OF COLLAGE PARK

- left monument as found
 lowered monument
 removed monument (explain)

On MARCH 15, 2010 placed a GPS - PHOTOS - TIES
date

SKETCH OF REFERENCE TIES



Statement of evidence relative to this corner is available from the St. Paul Public Works Dept., Survey Division

I hereby certify that this document and the data contained herein was prepared by me or under my direct supervision.

[Signature] May 13, 2010
SIGNATURE DATE

- Registration No. 44880
- Land Surveyor County Surveyor
 Professional Engineer
 Chief Surveyor, City of St. Paul

Office of The County Recorder, County of Ramsey

I hereby certify that this document was filed in the county
 Records office at _____ M. on the _____ day of _____

County Recorder _____

By _____, Deputy

DOCUMENT NUMBER _____