

CERTIFICATE OF MONUMENT LOCATION

City ID: 5938Old Index #: 2357

Alignment Corner of Section 29 Township 29 Range 22, 4th P.M.

STATE OF MINNESOTA, County of Ramsey

At the corner location shown on the sketch:

On Sept 20, 2012 found a GM 0.3 ft below asphalt grade at intersection
of CL Payne Ave & south R.O.W. line Magnolia Ave.

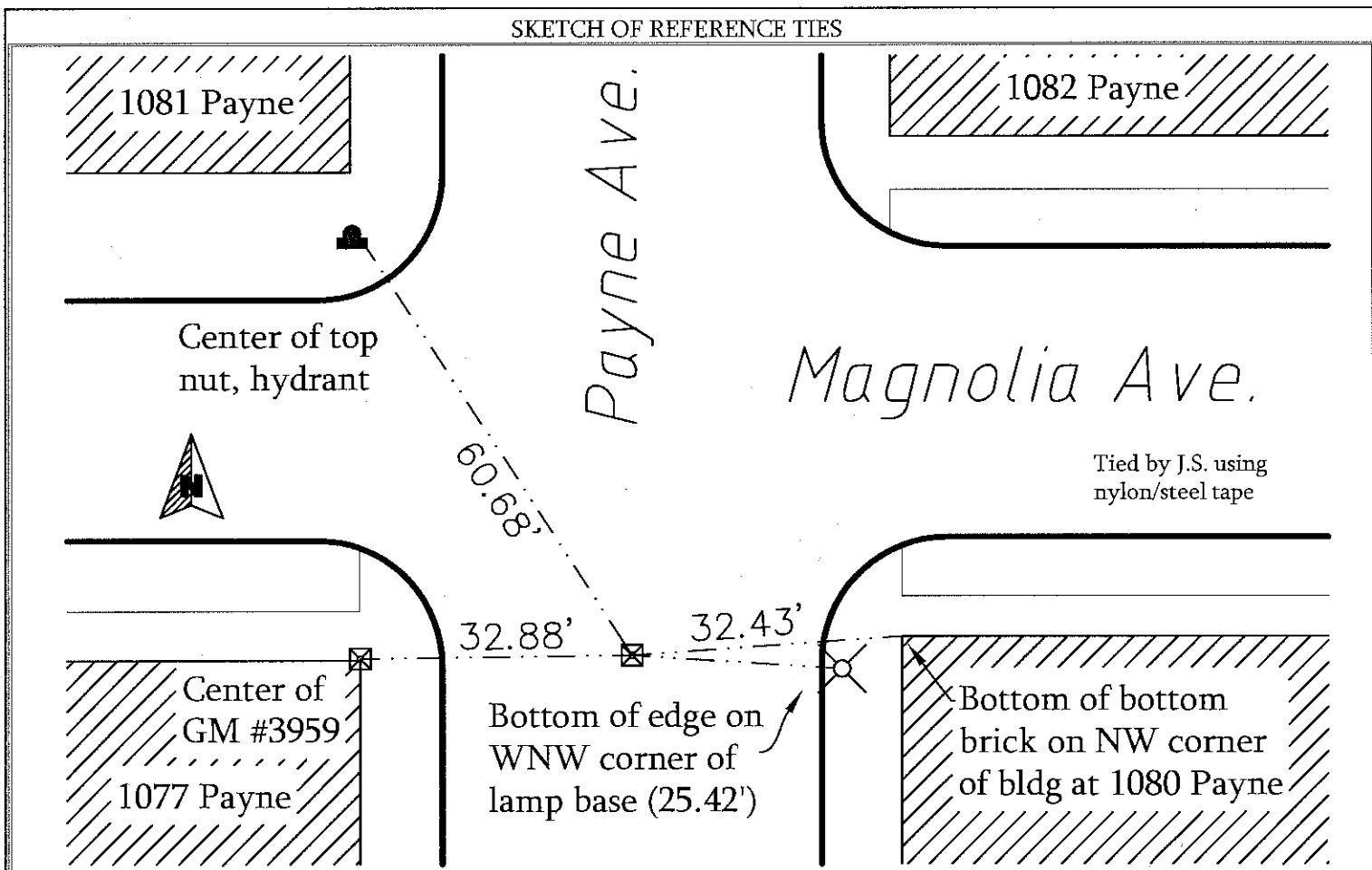
☒ left monument as found

☐ lowered monument

☐ removed monument (explain)

On _____ placed a _____

SKETCH OF REFERENCE TIES



Statement of evidence relative to this corner is available from the St. Paul Public Works Dept., Survey Division

I hereby certify that this document and the data contained herein was prepared by me or under my direct supervision.

 Jan 2, 2013
Registration No. 44880

- ☐ Land Surveyor ☐ County Surveyor
☐ Professional Engineer
☐ Chief Surveyor, City of St. Paul

Office of the County Recorder, County of Ramsey

I hereby certify that this document was filed in the county recorders office at _____ M. on the _____ day of _____

County Recorder _____

By _____, Deputy

DOCUMENT NUMBER _____

SCANNED ON 1/2/13 by 