

CERTIFICATE OF MONUMENT LOCATION

CITY MON. NO. 6133

OLD INDEX NO. 2611

GM BLK Corner in the SW Qtr. of Section 28 Township 29 Range 23

STATE OF MINNESOTA, County of Ramsey

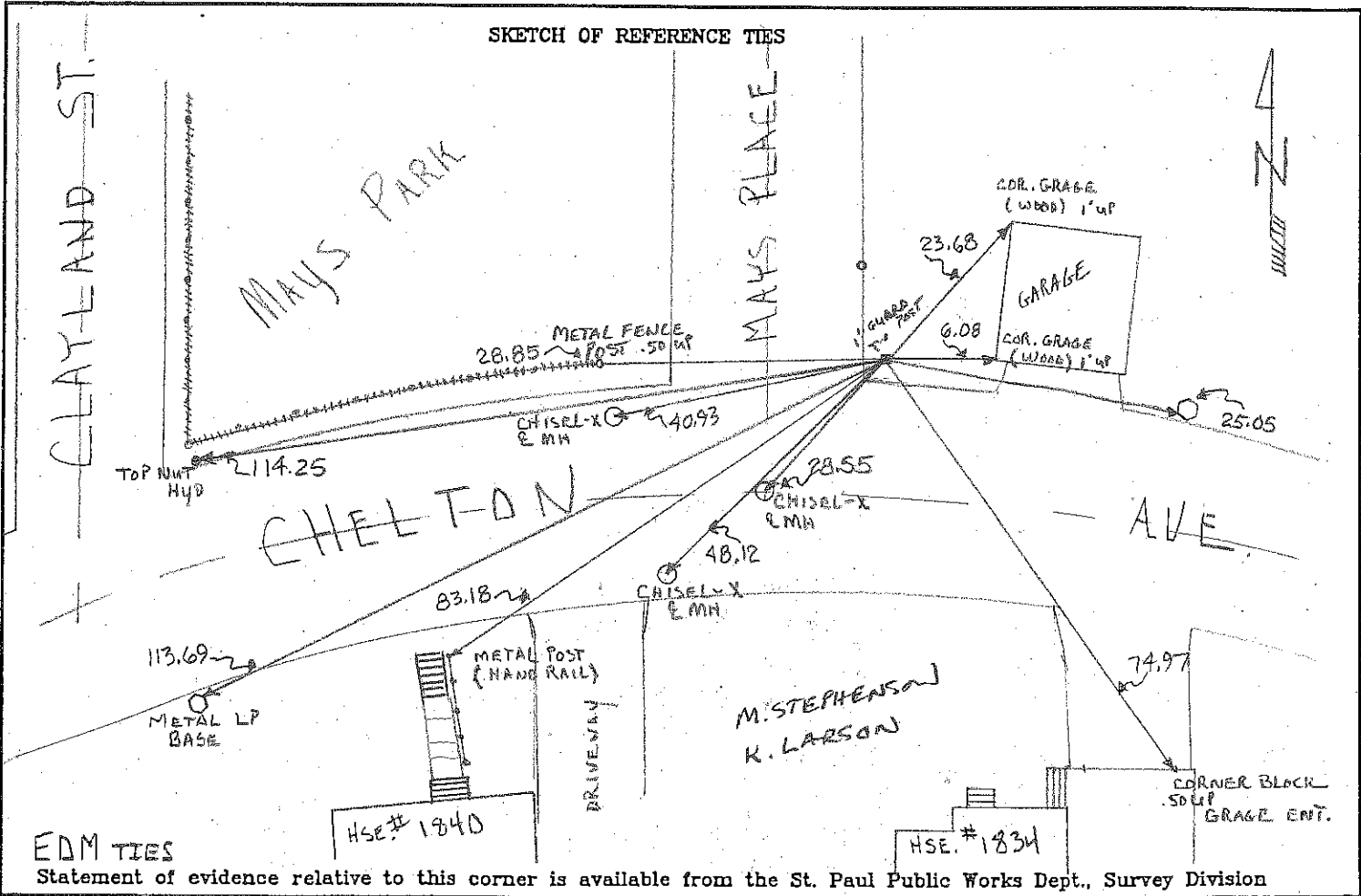
At the corner location shown on the sketch:

On MAY 22, 2012 found a GM BLK COR .80 BELOW SIDEWALK GRADE

NEC MAYS PLACE & CHELTON (TALKED WITH SIDEWALK CONCR. FORMAN TO FORM AROUND GM)

- left monument as found
- lowered monument
- removed monument (explain)

On 11-5-2012 placed a GUARD POST - PHOTOS - TIES



EDM TIES

Statement of evidence relative to this corner is available from the St. Paul Public Works Dept., Survey Division

I hereby certify that this document and the data contained herein was prepared by me or under my direct supervision.

[Signature]
SIGNATURE
DEC 24, 2012
DATE

- Registration No. 44880
- Land Surveyor
 - County Surveyor
 - Professional Engineer
 - Chief Surveyor, City of St. Paul

Office of The County Recorder, County of Ramsey

I hereby certify that this document was filed in the county Recorders office at _____ M. on the _____ day of _____

County Recorder _____

By _____, Deputy

DOCUMENT NUMBER _____