

CERTIFICATE OF MONUMENT LOCATION

CITY MON. NO. 6714

OLD INDEX NO. -- PQ

BLK Corner in the NE Qtr. of Section 21 Township 29 Range 22

STATE OF MINNESOTA, County of Ramsey

At the corner location shown on the sketch:

On FEB 16, 2010 found a CIM .25 BELOW GRADE NWL OF

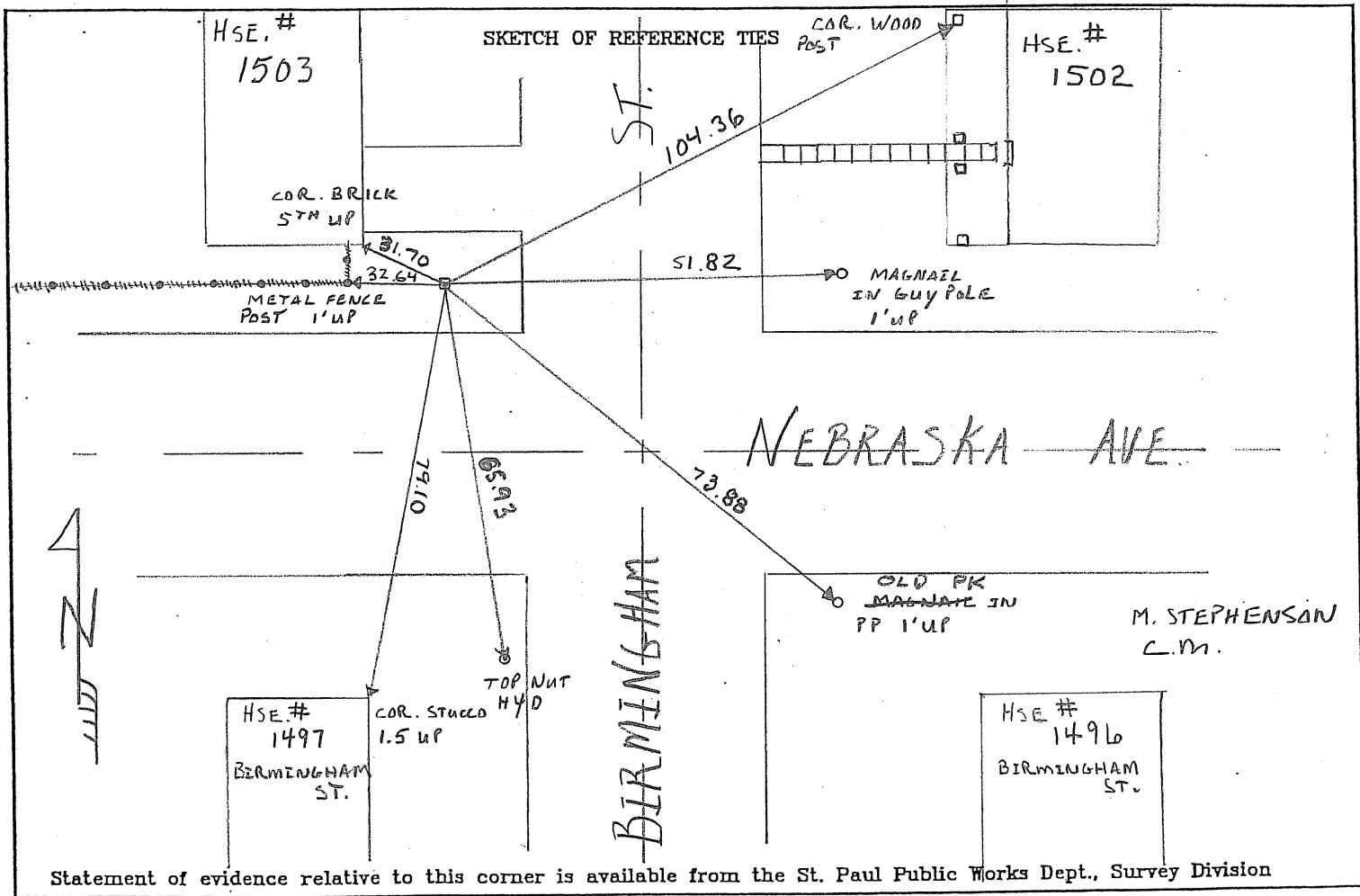
date

NEBRASKA AVE. & BIRMINGHAM ST.

left monument as found lowered monument removed monument (explain)

On FEB 16, 2010 placed a GPS - PHOTOS - TIES

date



Statement of evidence relative to this corner is available from the St. Paul Public Works Dept., Survey Division

I hereby certify that this document and the data contained herein was prepared by me or under my direct supervision.

[Signature]

MAR 16, 2010

SIGNATURE

DATE

Registration No. 44880

- Land Surveyor County Surveyor
- Professional Engineer
- Chief Surveyor, City of St. Paul

Office of The County Recorder, County of Ramsey

I hereby certify that this document was filed in the county

Recorders office at _____ M. on the _____ day of _____

County Recorder _____

By _____, Deputy

DOCUMENT NUMBER _____