

CERTIFICATE OF MONUMENT LOCATION

CITY MON. NO. 6721

OLD INDEX NO. --PX

BLK Corner in the SE Qtr. of Section 23 Township 29 Range 22

STATE OF MINNESOTA, County of Ramsey

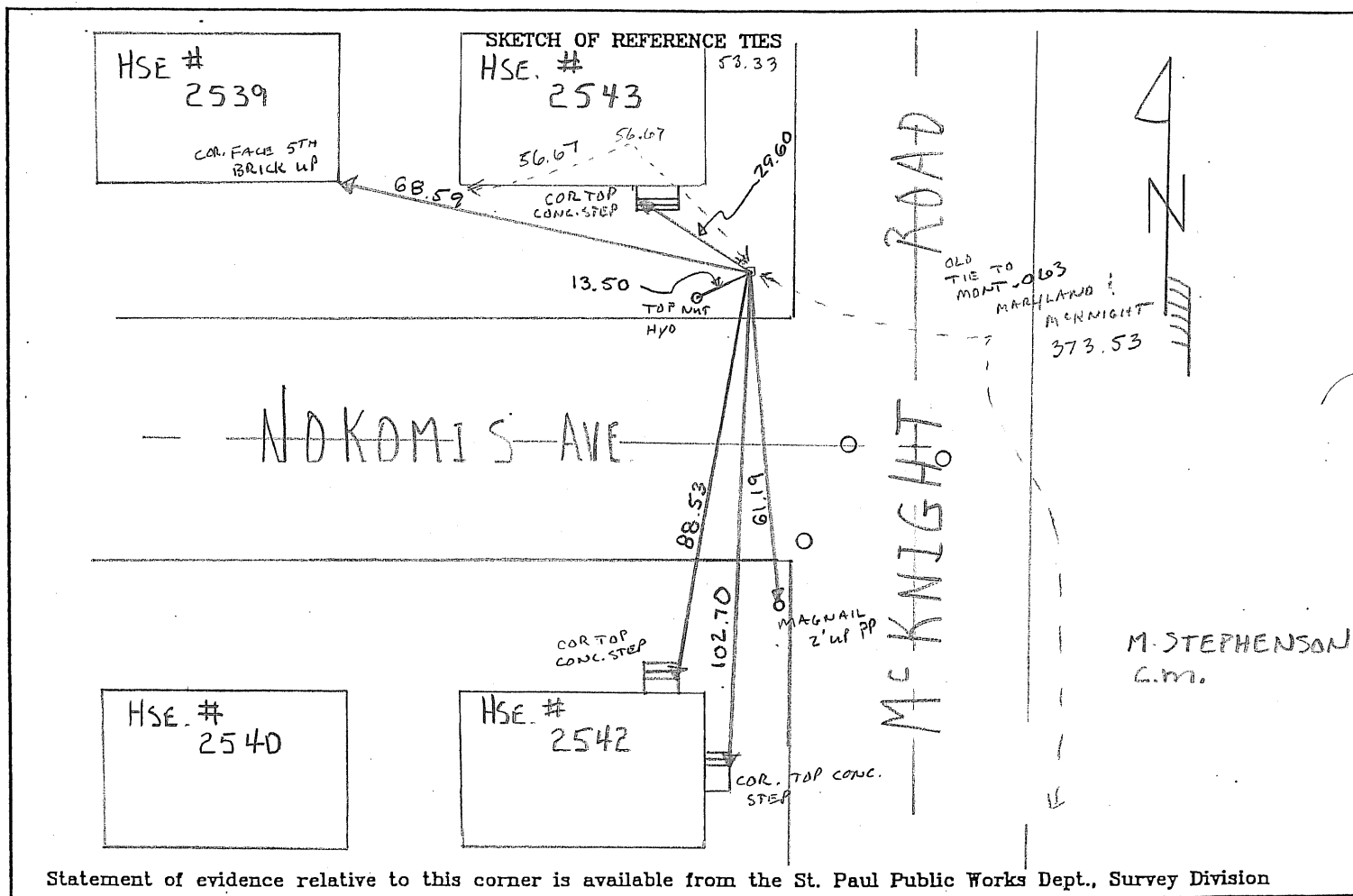
At the corner location shown on the sketch:

On FEB. 26. 2010 found a CONCRETE BLK COR. NWC MCKNIGHT RD
date

AND NOKOMIS AVE. @ SIDEWALK GRADE (NOTE: EAST SIDE OF MONT. BROKEN @)
WEST P. LINE OF MCKNIGHT

- left monument as found lowered monument removed monument (explain)

On FEB. 26. 2010 placed a GPS - PHOTOS - TIES
date



Statement of evidence relative to this corner is available from the St. Paul Public Works Dept., Survey Division

I hereby certify that this document and the data contained herein was prepared by me or under my direct supervision.

[Signature]
SIGNATURE

MAR 16, 2010
DATE

Registration No. 44880

- Land Surveyor County Surveyor
 Professional Engineer
 Chief Surveyor, City of St. Paul

Office of The County Recorder, County of Ramsey

I hereby certify that this document was filed in the county

Recorders office at _____ M. on the _____ day of _____

County Recorder _____

By _____, Deputy

DOCUMENT NUMBER _____