

# CERTIFICATE OF LOCATION OF GOVERNMENT CORNER

CITY MON. NO. 153

OLD INDEX NO. 1599

center Corner of Section 3 Township 28 Range 23,      P.M.

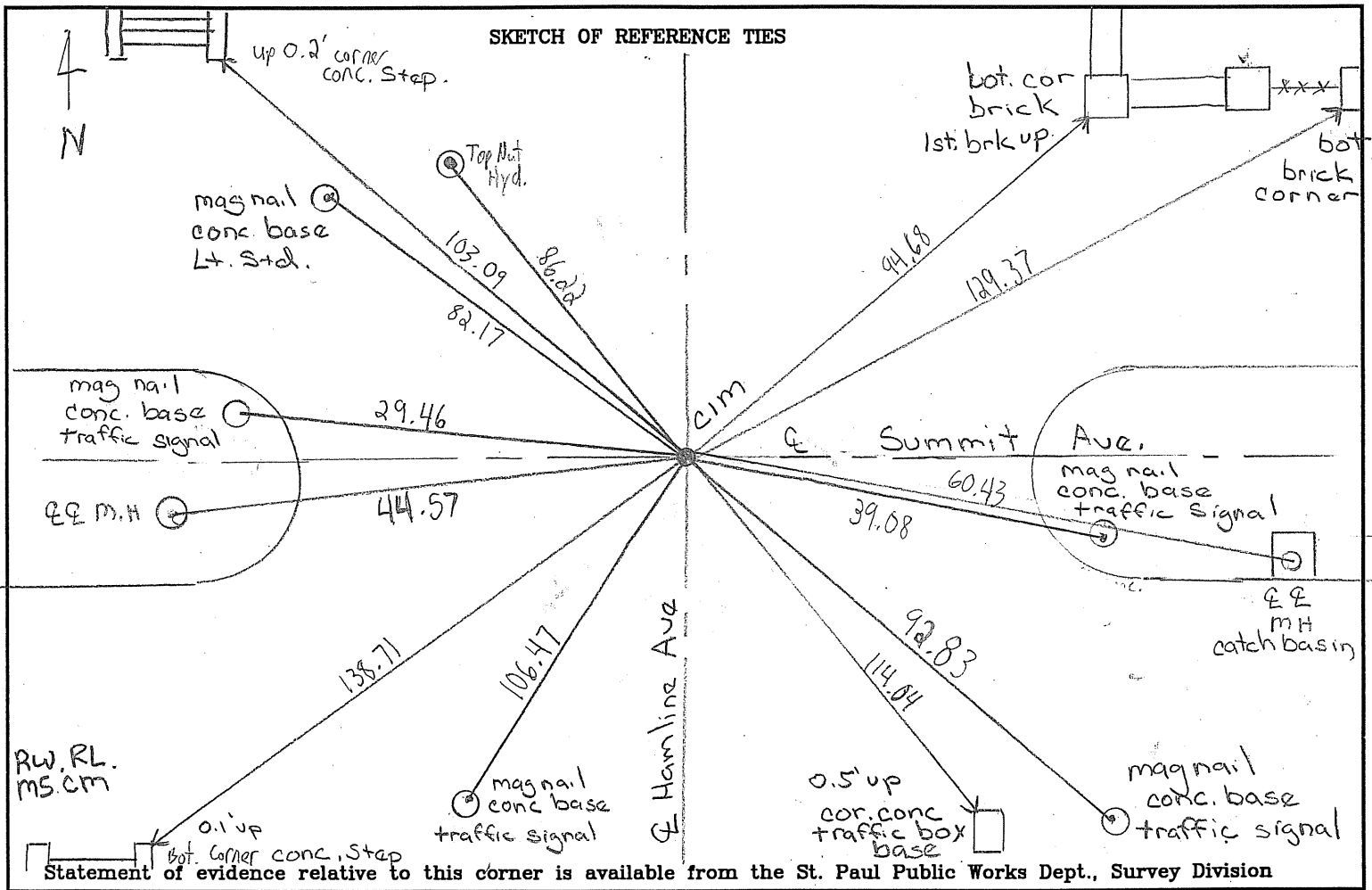
STATE OF MINNESOTA, County of Ramsey

At the corner location shown on the sketch:

On Nov. 10, 2009 found a iron pin at grade  
date

- left monument as found     
  lowered monument     
  removed monument (explain)

On Nov. 10, 2009 placed a cim 0.04' below asphalt surface  
date



I hereby certify that this document and the data contained herein was prepared by me or under my direct supervision.

[Signature] Feb 3, 2010  
SIGNATURE DATE

- Registration No. 44880
- Land Surveyor       County Surveyor  
 Professional Engineer  
 Chief Surveyor, City of St. Paul

Office of The County Recorder, County of Ramsey

I hereby certify that this document was filed in the county  
 Recorders office at      M. on the      day of     

County Recorder     

By     , Deputy

DOCUMENT NUMBER